

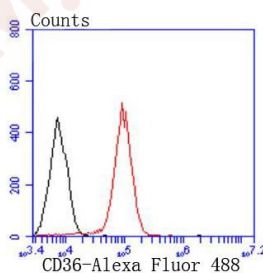
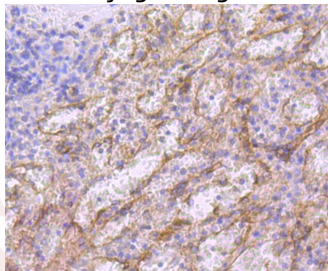
Anti-CD36 Antibody (6K672)

Product Details

Ig Type:	IgG
Reactivity:	Human,Mouse,Rat
Conjugation:	Unconjugated
Molecular Weight:	Theoretical: 70-110 kDa.
Clone:	6K672
Purification:	ProA affinity purified

Applications

- Verified Activity:
1. Immunohistochemical analysis of paraffin-embedded human spleen tissue using anti-CD36 antibody. Counter stained with hematoxylin.
 2. Flow cytometric analysis of THP-1 cells with CD36 antibody at 1/50 dilution (red) compared with an unlabelled control (cells without incubation with primary antibody; black). Alexa Fluor 488-conjugated goat anti rabbit IgG was used as the secondary antibody.



Application:	FCM,ICC/IF,IHC,IP,WB
Recommended	WB: 1:1000; IHC: 1:50-200; ICC/IF: 1:50-200; FCM: 1:50-100

Properties

Stability & Storage:	Store at -20°C or -80°C for 12 months. Avoid repeated freeze-thaw cycles.
Shipping:	Shipping with blue ice.

Antigen Details

Immunogen: Recombinant Protein

Uniprot ID: P16671

Synonyms: SR-B3;PAS IV;CD36;PAS-4;GP3B;CHDS7;GPIV;SRB3;BDPLT10;GPIIb;FATCHDS7;FAT;SCARB3

Research Background

CD36 (collagen type I receptor, thrombospondin receptor, FAT, GP4, GP3B, GPIV, PASIV, SCARB3) is a membrane glycoprotein on platelets, monocytes and umbilical vein endothelial cells. CD36 binds to collagen, thrombospondin, anionic phospholipids and oxidized LDL. CD36 plays a key role in both phagocytosis and lipid recycling, for constant production of mature spermatozoa. Mutations in this gene cause platelet glycoprotein deficiency. Three alternatively spliced transcript variants encoding the same protein isoform have been found for this gene. Thrombospondins are widely distributed proteins that influence a variety of adhesive processes and CD36 may have important functions as a cell adhesion molecule.

Inhibitor · Natural Compounds · Compound Libraries · Recombinant Proteins

This product is for Research Use Only · Not for Human or Veterinary or Therapeutic Use

Tel:781-999-4286 E_mail:info@targetmol.com Address:34 Washington Street,Wellesley Hills,MA 02481