

## Anti-CD31 Antibody (7C778)

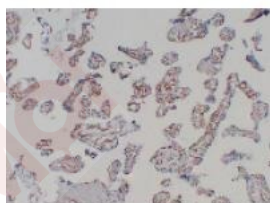
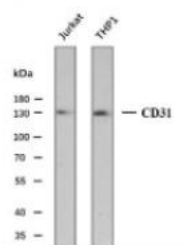
### Product Details

Reactivity: Human  
Conjugation: Unconjugated  
Clone: 7C778

### Applications

#### Verified Activity:

1. Western blot analysis of CD31 Antibody at 1:1000 dilution.
2. Immunohistochemical analysis of paraffin-embedded Placenta. 1, Antibody was diluted at 1:200(4°C overnight). 2, Citric acid ,pH6.0 was used for antigen retrieval. 3,Secondary antibody was diluted at 1:200(room temperature, 30min).



Application: IF,IHC-P,WB  
Recommended WB: 1:500-2000; IHC-P: 1:100-500

### Properties

Stability & Storage: Store at -20°C or -80°C for 12 months. Avoid repeated freeze-thaw cycles.  
Shipping: Shipping with blue ice.

### Antigen Details

Immunogen: A synthesized phosphopeptide: human CD31 around the non-phosphorylation site of Y713  
Antigen Species: human  
Uniprot ID: P16284  
Synonyms: EndoCAM;PECA1;GPIIA';CD31;PECAM-1;FLJ58394;FLJ34100

---

### Research Background

platelet and endothelial cell adhesion molecule 1(PECAM1) Homo sapiens The protein encoded by this gene is found on the surface of platelets, monocytes, neutrophils, and some types of T-cells, and makes up a large portion of endothelial cell intercellular junctions. The encoded protein is a member of the immunoglobulin superfamily and is likely involved in leukocyte migration, angiogenesis, and integrin activation.

**Inhibitor · Natural Compounds · Compound Libraries · Recombinant Proteins**

This product is for Research Use Only· Not for Human or Veterinary or Therapeutic Use

Tel:781-999-4286 E\_mail:info@targetmol.com Address:34 Washington Street,Wellesley Hills,MA 02481