

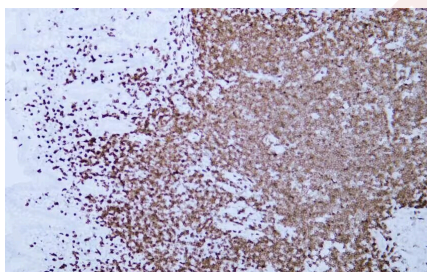
Anti-CD3 epsilon/CD3e Antibody (8S847)

Product Details

Ig Type:	IgG2a, Kappa
Reactivity:	Human
Conjugation:	Unconjugated
Clone:	8S847
Purification:	The antibody was affinity-purified from mouse ascites by affinity-chromatography using specific immunogen.

Applications

Verified Activity: 1. Human appendix tissue was stained with Anti-CD3 Antibody.



Application: ICC/IF,IHC,WB
Recommended IHC: 1:100-500; ICC/IF: 1:100-500

Properties

Stability & Storage: Store at -20°C or -80°C for 12 months. Avoid repeated freeze-thaw cycles.
Shipping: Shipping with blue ice.

Antigen Details

Immunogen: A synthesized peptide: human CD3, CD3E
Antigen Species: human
Gene ID: 916
Uniprot ID: P07766
Synonyms: CD3 epsilon;T3E;CD3 ε/CD3e;CD3e molecule, ε (CD3-TCR complex);IMD18;CD3e molecule, epsilon (CD3-TCR complex);TCRE;CD3 ε

Inhibitor · Natural Compounds · Compound Libraries · Recombinant Proteins

This product is for Research Use Only. Not for Human or Veterinary or Therapeutic Use

Tel:781-999-4286 E_mail:info@targetmol.com Address:34 Washington Street,Wellesley Hills,MA 02481