

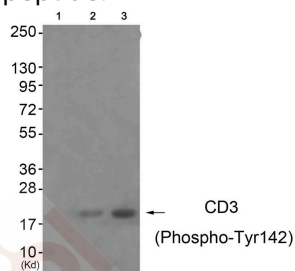
Anti-Phospho-CD3 zeta/CD247 (Tyr142) Polyclonal Antibody

Product Details

Ig Type:	IgG
Reactivity:	Human,Mouse
Conjugation:	Unconjugated
Molecular Weight:	Actual: 20 kDa.
Purification:	Antibodies were produced by immunizing rabbits with synthetic phosphopeptide and KLH conjugates. Antibodies were purified by affinity-chromatography using epitope-specific phosphopeptide. Non-phospho specific antibodies were removed by chromatography using non-phosphopeptide.

Applications

Verified Activity: 1. Western blot analysis of extracts from JK cells (Lane 2) and K562 cells (Lane 3), using CD3ζ (Phospho-Tyr142) Antibody TMAC-00691. The lane on the left is treated with antigen-specific peptide.



Application:	WB
Recommended	WB: 1:500-1000

Properties

Stability & Storage:	Store at -20°C or -80°C for 12 months. Avoid repeated freeze-thaw cycles.
Shipping:	Shipping with blue ice.

Antigen Details

Immunogen:	Peptide sequence around phosphorylation site of tyrosine 142 (G-L-Y(p)-Q-G) derived from Human CD3 ζ
Antigen Species:	Human
Uniprot ID:	P20963
Synonyms:	p-CD3 zeta/CD247 (Y142);p-CD3 zeta/CD247 (Tyr142);CD3 zeta/CD247 (p-Y142);CD3 zeta/CD247 (p-Tyr142)

Research Background

Probable role in assembly and expression of the TCR complex as well as signal transduction upon antigen triggering.

Inhibitor · Natural Compounds · Compound Libraries · Recombinant Proteins

This product is for Research Use Only · Not for Human or Veterinary or Therapeutic Use

Tel:781-999-4286 E_mail:info@targetmol.com Address:34 Washington Street,Wellesley Hills,MA 02481