

Anti-CD3 epsilon/CD3e Antibody (6D908)

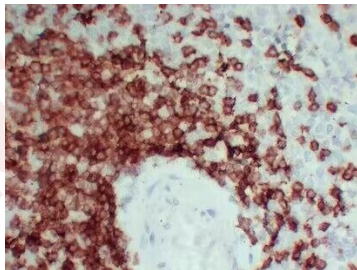
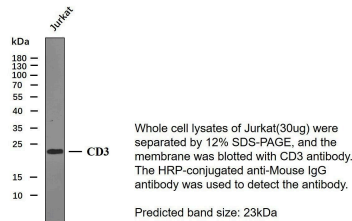
Product Details

Ig Type:	IgG2a, Kappa
Reactivity:	Human
Conjugation:	Unconjugated
Clone:	6D908
Purification:	The antibody was affinity-purified from mouse ascites by affinity-chromatography using specific immunogen.

Applications

Verified Activity:

1. Western blot analysis of CD3Antibody at 1:1000 dilution.
2. Immunohistochemical analysis of paraffin-embedded Spleen-high magnification.



Application:	IF,IHC
Recommended	IHC: 1:100-500; WB: 1:500-2000; IF: 1:50-200

Properties

Stability & Storage:	Store at -20°C or -80°C for 12 months. Avoid repeated freeze-thaw cycles.
Shipping:	Shipping with blue ice.

Antigen Details

Immunogen: A synthesized peptide: human CD3
Antigen Species: human
Uniprot ID: P07766
Synonyms: IMD18;T3E;CD3 epsilon;CD3e molecule, ϵ (CD3-TCR complex);CD3 ϵ ;CD3 ϵ /CD3e;CD3e molecule, epsilon (CD3-TCR complex);TCRE

Inhibitor · Natural Compounds · Compound Libraries · Recombinant Proteins

This product is for Research Use Only · Not for Human or Veterinary or Therapeutic Use

Tel:781-999-4286 E_mail:info@targetmol.com Address:34 Washington Street,Wellesley Hills,MA 02481