

## Anti-CD25/IL2R alpha Antibody (8I39)

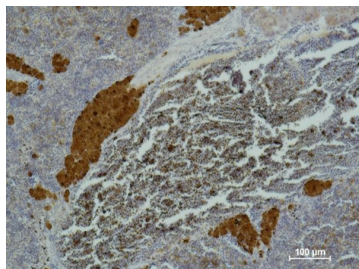
### Product Details

Ig Type:	IgG1
Reactivity:	Human
Conjugation:	Unconjugated
Clone:	8I39

### Applications

#### Verified Activity:

1. Immunohistochemical analysis of paraffin-embedded Mouse Spleen Tissue using CD 25 Mouse mAb diluted at 1:500.



Application:	IHC
Recommended	IHC: 1:50-200

### Properties

Stability & Storage:	Store at -20°C or -80°C for 12 months. Avoid repeated freeze-thaw cycles.
Shipping:	Shipping with blue ice.

### Antigen Details

Immunogen:	A synthesized peptide
Uniprot ID:	P01589
Synonyms:	p55;Interleukin-2 receptor subunit alpha;TAC antigen

**Inhibitor · Natural Compounds · Compound Libraries · Recombinant Proteins**

This product is for Research Use Only. Not for Human or Veterinary or Therapeutic Use

Tel: 781-999-4286 E\_mail: info@targetmol.com Address: 34 Washington Street, Wellesley Hills, MA 02481