

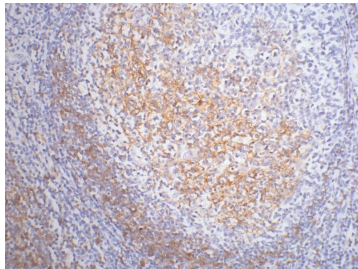
## Anti-CD23 Antibody (6Q789)

### Product Details

Reactivity:	Human,Mouse,Rat
Conjugation:	Unconjugated
Molecular Weight:	Actual: 28, 38, 49 kDa.
Clone:	6Q789
Purification:	Affinity purification using immunogen.

### Applications

Verified Activity: 1. IHC staining of paraffin-embedded Human tonsil tissue with CD23 mouse mAb diluted at 1:200.



Application:	IHC
Recommended	IHC: 1:200

### Properties

Stability & Storage:	Store at -20°C or -80°C for 12 months. Avoid repeated freeze-thaw cycles.
Shipping:	Shipping with blue ice.

### Antigen Details

Uniprot ID:	P30273
Synonyms:	Fc fragment of IgE receptor II;FCER2;Fcer2a

### Research Background

The CD23 antigen is the low affinity IgE Fc receptor, which is a 49 kDa protein with 38 and 28 kDa fragments. It is expressed on most mature, conventional B cells and can also be found on the surface of T cells, macrophages, platelets and EBV transformed B lymphoblasts. Expression of CD23 has been detected in neoplastic cells from cases of B cell chronic Lymphocytic leukemia. CD23 is expressed by B cells in the follicular mantle but not by proliferating germinal centre cells. CD23 is also expressed by eosinophils.

**Inhibitor · Natural Compounds · Compound Libraries · Recombinant Proteins**

This product is for Research Use Only· Not for Human or Veterinary or Therapeutic Use

Tel:781-999-4286 E\_mail:info@targetmol.com Address:34 Washington Street,Wellesley Hills,MA 02481