

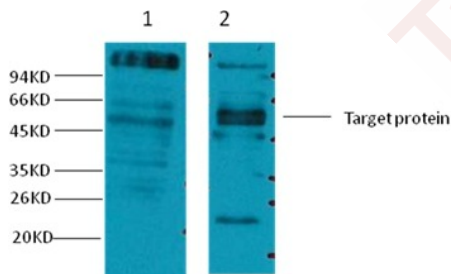
Anti-CD23 Antibody (6P362)

Product Details

Reactivity:	Human,Mouse,Rat
Conjugation:	Unconjugated
Molecular Weight:	Actual: 10 kDa.
Clone:	6P362
Purification:	Affinity purification using immunogen.

Applications

Verified Activity: 1. Western blot analysis of 1) HeLa, 2) Mouse Brain tissue, using TMAC-00684 diluted at 1:2,000.



Application:	IHC,WB
Recommended	WB: 1:1000-2000

Properties

Stability & Storage:	Store at -20°C or -80°C for 12 months. Avoid repeated freeze-thaw cycles.
Shipping:	Shipping with blue ice.

Antigen Details

Uniprot ID:	P30273
Synonyms:	Fc fragment of IgE receptor II;FCER2;Fcer2a

Research Background

CD23, also known as Fc epsilon RII, or FcεRII, is the "low-affinity" receptor for IgE, an antibody isotype involved in allergy and resistance to parasites, and is important in regulation of IgE levels. Unlike many of the antibody receptors, CD23 is a C-type lectin. It is found on mature B cells, activated macrophages, eosinophils, follicular dendritic cells, and platelets

Inhibitor · Natural Compounds · Compound Libraries · Recombinant Proteins

This product is for Research Use Only · Not for Human or Veterinary or Therapeutic Use

Tel:781-999-4286 E_mail:info@targetmol.com Address:34 Washington Street,Wellesley Hills,MA 02481