

## Anti-Phospho-Mucin-1/MUC1 (Tyr1229) Polyclonal Antibody 2

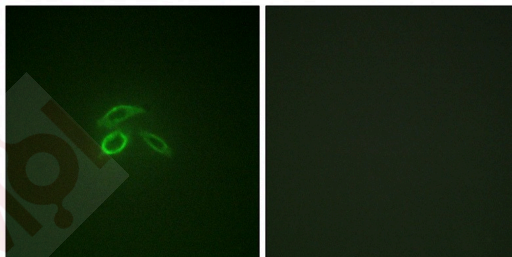
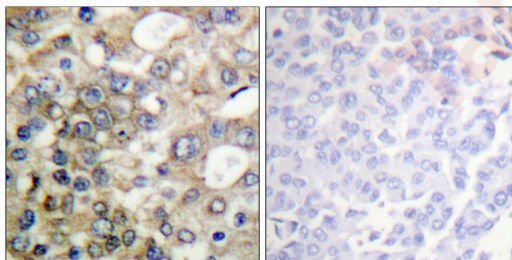
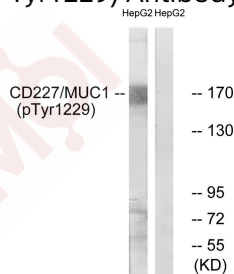
### Product Details

Ig Type:	IgG
Reactivity:	Human
Conjugation:	Unconjugated
Molecular Weight:	Actual: 170 kDa.
Purification:	Antibodies were produced by immunizing rabbits with synthetic phosphopeptide and KLH conjugates. Antibodies were purified by affinity-chromatography using epitope-specific phosphopeptide. Non-phospho specific antibodies were removed by chromatography using non-phosphopeptide.

### Applications

#### Verified Activity:

1. Western blot analysis of extracts from HepG2 cells treated with PMA using CD227/MUC1 (Phospho-Tyr1229) Antibody TMAC-00682. The lane on the right is treated with the antigen-specific peptide.
2. Immunohistochemical analysis of paraffin-embedded human breast carcinoma tissue using CD227/MUC1 (Phospho-Tyr1229) antibody TMAC-00682 (left) or the same antibody preincubated with blocking peptide (right).
3. Immunofluorescence staining of methanol-fixed HepG2 cells using CD227/MUC1 (Phospho-Tyr1229) Antibody TMAC-00682.



Application: IF,IHC,WB

## A DRUG SCREENING EXPERT

---

Recommended WB: 1:500-1000; IHC: 1:50-100; IF: 1:100-200

---

### Properties

Stability & Storage: Store at -20°C or -80°C for 12 months. Avoid repeated freeze-thaw cycles.

Shipping: Shipping with blue ice.

---

### Antigen Details

Immunogen: Peptide sequence around phosphorylation site of tyrosine 1229 S-P-Y(p)-E-K derived from Human CD227/MUC1

Antigen Species: Human

Uniprot ID: P15941

Synonyms: p-Mucin-1/MUC1 (Y1229);Mucin-1/MUC1 (p-Tyr1229);p-Mucin-1/MUC1 (Tyr1229);Mucin-1/MUC1 (p-Y1229)

---

### Research Background

The alpha subunit has cell adhesive properties. Can act both as an adhesion and an adhesion protein. May provide a protective layer on epithelial cells against bacterial and enzyme attack.

**Inhibitor · Natural Compounds · Compound Libraries · Recombinant Proteins**

This product is for Research Use Only · Not for Human or Veterinary or Therapeutic Use

Tel:781-999-4286 E\_mail:info@targetmol.com Address:34 Washington Street,Wellesley Hills,MA 02481

---