

Anti-CD21 Antibody (2Z920)

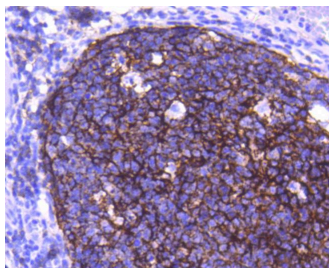
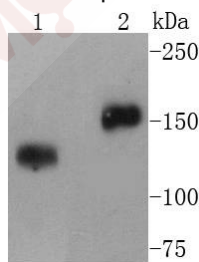
Product Details

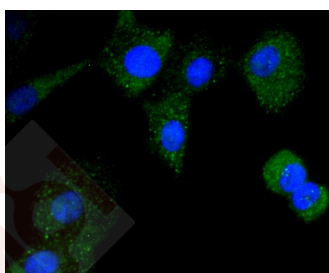
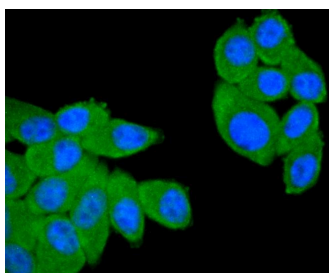
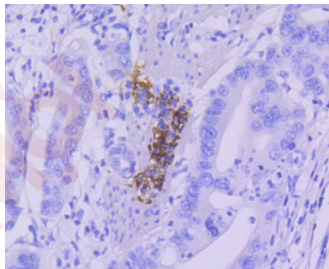
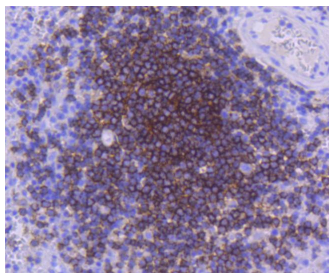
Ig Type:	IgG
Reactivity:	Human,Mouse
Conjugation:	Unconjugated
Molecular Weight:	Theoretical: 130-155 kDa.
Clone:	2Z920
Purification:	ProA affinity purified

Applications

Verified Activity:

1. Western blot analysis of CD21 on different lysates using anti-CD21 antibody at 1/1,000 dilution. Positive control: Lane 1: Daudi, Lane 2: Raji.
2. Immunohistochemical analysis of paraffin-embedded human tonsil tissue using anti-CD21 antibody. Counter stained with hematoxylin.
3. Immunohistochemical analysis of paraffin-embedded human spleen tissue using anti-CD21 antibody. Counter stained with hematoxylin.
4. Immunohistochemical analysis of paraffin-embedded human gastric cancer tissue using anti-CD21 antibody. Counter stained with hematoxylin.
5. ICC staining CD21 in HepG2 cells (green). The nuclear counter stain is DAPI (blue). Cells were fixed in paraformaldehyde, permeabilised with 0.25% Triton X100/PBS.
6. ICC staining CD21 in A549 cells (green). The nuclear counter stain is DAPI (blue). Cells were fixed in paraformaldehyde, permeabilised with 0.25% Triton X100/PBS.





Application: FCM, ICC, IHC, IP, WB

Recommended WB: 1:1000-2000; IHC: 1:50-200; ICC: 1:50-200; FCM: 1:50-100

Properties

Stability & Storage: Store at -20°C or -80°C for 12 months. Avoid repeated freeze-thaw cycles.

Shipping: Shipping with blue ice.

Antigen Details

Immunogen: Recombinant Protein

Uniprot ID: P20023

Synonyms: C3DR; SLEB9; CVID7; CD21; C3DRSLEB9; CR2; EBV receptor

Research Background

CD21 is a type I integral membrane glycoprotein that serves as a receptor for the C3d complement fragment and for the Epstein-Barr virus. It plays a role in B cell activation and proliferation and undergoes phosphorylation after B cell activation with phorbol esters. CD21 is expressed on mature B cells, follicular dendritic cells, pharyngeal and cervical epithelial cells and a subset of thymocytes. The adaptive immune response is tightly regulated to limit responding cells in an antigen-specific manner. On B cells, co-receptors CD21/CD19 modulate the strength of B cell Ag receptor

A DRUG SCREENING EXPERT

(BCR) signals, thereby influencing cell fate. Complement receptor (CR) type 2 (CR2/ CD21) is normally expressed during the immature and mature stages of B cell development. In association with CD19, CR21 plays an important role in enhancing mature B cell responses to foreign antigens.

Inhibitor · Natural Compounds · Compound Libraries · Recombinant Proteins

This product is for Research Use Only · Not for Human or Veterinary or Therapeutic Use

Tel:781-999-4286 E_mail:info@targetmol.com Address:34 Washington Street,Wellesley Hills,MA 02481