

Anti-KRT20 Antibody (8H18)

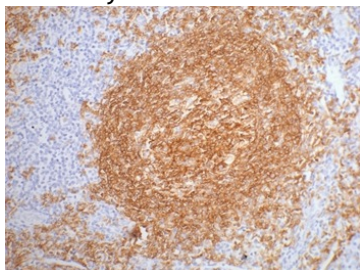
Product Details

| | |
|-------------------|--|
| Reactivity: | Human,Mouse,Rat |
| Conjugation: | Unconjugated |
| Molecular Weight: | Actual: 35-37 kDa. |
| Clone: | 8H18 |
| Purification: | Affinity purification using immunogen. |

Applications

Verified Activity:

1. IHC staining of paraffin-embedded Human tonsil tissue with CD20 Mouse Monoclonal Antibody diluted at 1:200.



| | |
|--------------|------------|
| Application: | IHC |
| Recommended | IHC: 1:200 |

Properties

| | |
|----------------------|---|
| Stability & Storage: | Store at -20°C or -80°C for 12 months. Avoid repeated freeze-thaw cycles. |
| Shipping: | Shipping with blue ice. |

Antigen Details

| | |
|-------------|--|
| Uniprot ID: | P35900 |
| Synonyms: | Keratin;Keratin-20;CK-20;KRT 20;type I cytoskeletal 20;K20;Protein IT;Cytokeratin-20 |

Research Background

CD20 is a non glycosylated protein with a molecular weight of 35 or 37 kDa depending on the degree of phosphorylation. Although not a member of the tetraspanin superfamily of cell surface receptors, it crosses the cell membrane four times. The CD20 antigen is present on human pre B lymphocytes and on B lymphocytes at all stages of maturation, except on plasma cells. Low level expression of the CD20 antigen has been detected on normal T lymphocytes. The CD20 molecule is involved in regulation of B cell differentiation, presumably via its reported function as a Ca²⁺ channel subunit.

Inhibitor · Natural Compounds · Compound Libraries · Recombinant Proteins

This product is for Research Use Only. Not for Human or Veterinary or Therapeutic Use

Tel:781-999-4286 E_mail:info@targetmol.com Address:34 Washington Street,Wellesley Hills,MA 02481