

## Anti-CD20 Antibody (3J782)

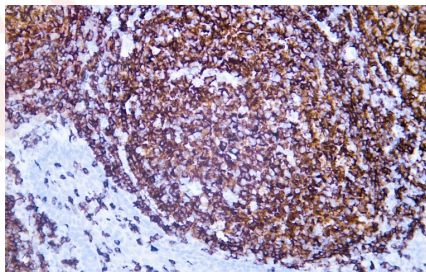
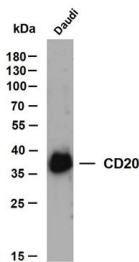
### Product Details

|               |  |
|---------------|--|
| Ig Type:      | IgG1, Kappa  |
| Reactivity:   | Human  |
| Conjugation:  | Unconjugated   |
| Clone:        | 3J782  |
| Purification: | The antibody was affinity-purified from mouse ascites by affinity-chromatography using specific immunogen. |

### Applications

#### Verified Activity:

1. Whole cell lysates were separated by 10% SDS-PAGE, and the membrane was blotted with anti-CD20 antibody.
2. Human tonsil tissue was stained with anti-CD20 antibody.



|              |   |
|--------------|---|
| Application: | IF,IHC,WB                                     |
| Recommended  | IHC: 1:100-500; WB: 1:200-1000; IF: 1:100-500 |

### Properties

|                      |   |
|----------------------|---|
| Stability & Storage: | Store at -20°C or -80°C for 12 months. Avoid repeated freeze-thaw cycles. |
| Shipping:            | Shipping with blue ice.   |

**Antigen Details**

Immunogen: A synthesized peptide: human CD20  
Antigen Species: human  
Gene ID: 931  
Uniprot ID: P11836  
Synonyms: MS4A-1;MS4A1;Bp35;Membrane-spanning 4-domains subfamily A member 11;Leukocyte surface antigen Leu-16;CD20;B-lymphocyte surface antigen B1

**Inhibitor · Natural Compounds · Compound Libraries · Recombinant Proteins**

This product is for Research Use Only· Not for Human or Veterinary or Therapeutic Use

Tel:781-999-4286 E\_mail:info@targetmol.com Address:34 Washington Street,Wellesley Hills,MA 02481