

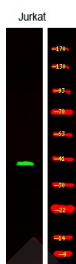
## Anti-Phospho-SLAMF1 (Tyr327) Polyclonal Antibody

## Product Details

Ig Type:	IgG
Reactivity:	Human,Mouse
Conjugation:	Unconjugated
Molecular Weight:	Theoretical: 70 kDa.
Purification:	Antibodies were produced by immunizing rabbits with synthetic phosphopeptide and KLH conjugates. Antibodies were purified by affinity-chromatography using epitope-specific phosphopeptide. Non-phospho specific antibodies were removed by chromatography using non-phosphopeptide.

## Applications

Verified Activity: 1. Western Blot analysis of lysates of Jurkat, using primary antibody at 1:1000 dilution.



Application: WB  
Recommended WB: 1:1000

## Properties

Stability & Storage: Store at -20°C or -80°C for 12 months. Avoid repeated freeze-thaw cycles.  
Shipping: Shipping with blue ice.

## Antigen Details

Immunogen: A synthesized phosphopeptide: human CD150 around the phosphorylation site of Tyr327  
Antigen Species: human  
Uniprot ID: Q13291  
Synonyms: p-SLAMF1 (Y327);p-SLAMF1 (Tyr327);SLAMF1 (p-Tyr327);SLAMF1 (p-Y327)

**Inhibitor · Natural Compounds · Compound Libraries · Recombinant Proteins**

This product is for Research Use Only · Not for Human or Veterinary or Therapeutic Use

Tel:781-999-4286 E\_mail:info@targetmol.com Address:34 Washington Street,Wellesley Hills,MA 02481