

Anti-CD11b Antibody (5B108)

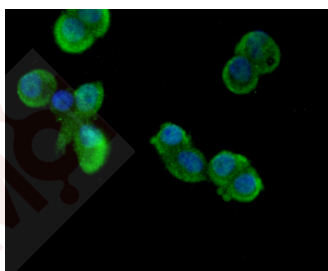
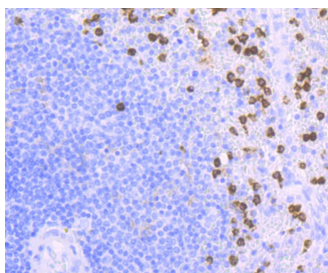
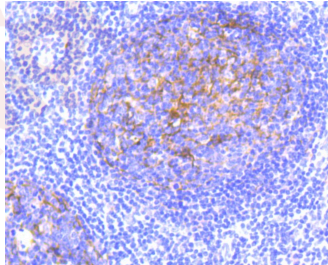
Product Details

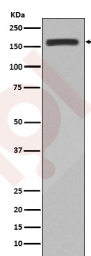
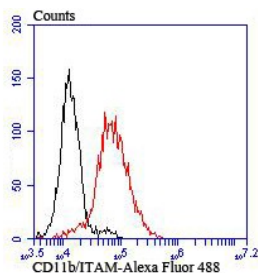
Ig Type:	IgG
Reactivity:	Human,Mouse,Rat
Conjugation:	Unconjugated
Molecular Weight:	Theoretical: 170 kDa.
Clone:	5B108
Purification:	ProA affinity purified

Applications

Verified Activity:

1. Immunohistochemical analysis of paraffin-embedded human tonsil tissue using anti-CD11b antibody. Counter stained with hematoxylin.
2. Immunohistochemical analysis of paraffin-embedded human spleen tissue using anti-CD11b antibody. Counter stained with hematoxylin.
3. ICC staining CD11b in LOVO cells (green). The nuclear counter stain is DAPI (blue). Cells were fixed in paraformaldehyde, permeabilised with 0.25% Triton X100/PBS.
4. Flow cytometric analysis of THP-1 cells with CD11b antibody at 1/100 dilution (red) compared with an unlabelled control (cells without incubation with primary antibody; black). Alexa Fluor 488-conjugated goat anti rabbit IgG was used as the secondary antibody.
5. Western blot analysis of CD11b expression in RAW264.7 cell lysate.





Application: FCM,ICC,IF,IHC,IP,WB

Recommended IHC: 1:50-200; ICC: 1:50-200; FCM: 1:50-100

Properties

Stability & Storage: Store at -20°C or -80°C for 12 months. Avoid repeated freeze-thaw cycles.

Shipping: Shipping with blue ice.

Antigen Details

Immunogen: Recombinant Protein

Uniprot ID: P11215

Synonyms: ITAM_HUMAN;CD11b/CD18;Ly-40;Neutrophil adherence receptor;MAC1;CD11b;Antigen CD11b p170;Mac1, alpha subunit;MAC 1;Macrophage antigen alpha polypeptide;Neutrophil adherence receptor alpha M subunit;Cell surface glycoprotein MAC-1 subunit alpha; MGC117044;Integrin beta 2 alpha subunit;SLEB6;Integrin alpha-M;CD49d;Integrin Alpha M; CD11 antigen-like family member B;ITGAM;CR-3 alpha chain;MAC1A;Integrin alpha M chain; CD11 antigen like family member B;Mac-1a;CR 3 alpha chain;MO1A;CR3A;CR3;Mo1, alpha subunit;F730045J24Rik;Leukocyte adhesion receptor MO1;CR 3 alpha chain (CR3A);Integrin subunit alpha M;Complement Component Receptor 3 Alpha;antigen CD11b (p170); Complement receptor type 3, alpha subunit;Complement component 3 receptor 3 subunit; integrin, alpha M (complement component 3 receptor 3 subunit)

Research Background

Integrin α M, also designated complement component receptor-3 α , CD11b (p170), macrophage antigen a polypeptide, cell surface glycoprotein Mac-1 a subunit, MAC1A, MO1A and ITGAM) is a cell adhesion molecule that acts as a receptor for cell surface ligands such as intracellular adhesion molecules (ICAMs) or soluble ligands. Integrins are heterodimeric proteins that contain an a chain and b chain. Integrin α M combines with the Integrin β 2 to form a leukocyte-specific integrin referred to as macrophage receptor 1 (Mac-1), or inactivated-C3b (iC3b) receptor 3 (CR3). Integrin α M/ β 2 is important in the adherence of neutrophils and monocytes to stimulated endothelium, and also in the phagocytosis of complement coated particles.

Inhibitor · Natural Compounds · Compound Libraries · Recombinant Proteins

This product is for Research Use Only · Not for Human or Veterinary or Therapeutic Use

Tel:781-999-4286 E_mail:info@targetmol.com Address:34 Washington Street,Wellesley Hills,MA 02481