

## Anti-CD11b Antibody (5C987)

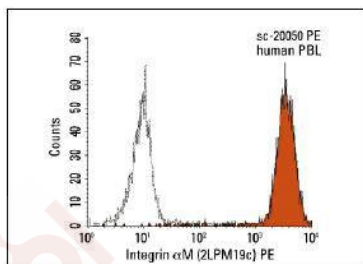
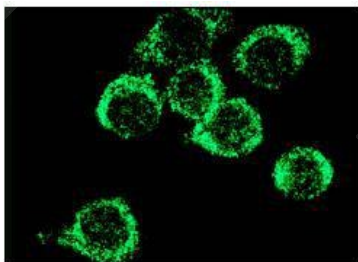
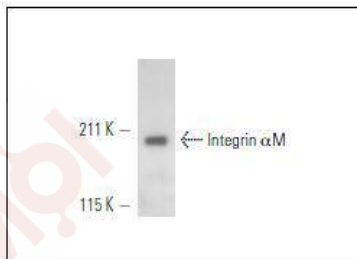
### Product Details

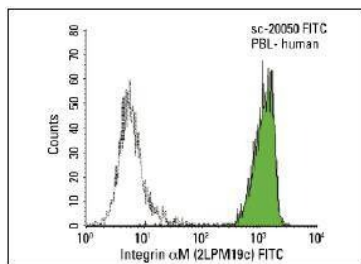
Reactivity:	Human, Mouse
Conjugation:	Unconjugated
Molecular Weight:	Theoretical: 170 kDa.
Clone:	5C987
Purification:	ProA affinity purified

### Applications

#### Verified Activity:

- Western blot analysis of Integrin  $\alpha$ M expression in human PBL whole cell lysate immunoprecipitated with Integrin  $\alpha$ M (2LPM19c) and detected with Integrin  $\alpha$ M (H-61).
- Immunofluorescence staining of methanol-fixed RAW 264.7 cells showing membrane staining.
- FCM analysis of human peripheral blood leukocytes. Black line histogram represents the isotype control, normal mouse IgG1.
- FCM analysis of human peripheral blood leukocytes. Black line histogram represents the isotype control, normal mouse IgG1.





Application: FCM,IF,IP

Recommended IP: 1-2 µg per 100-500 µg of total protein(1 ml of cell lysate); FCM: 1 µg per 1 x 10<sup>6</sup> cells

### Properties

Stability & Storage: Store at -20°C or -80°C for 12 months. Avoid repeated freeze-thaw cycles.

Shipping: Shipping with blue ice.

### Antigen Details

Immunogen: Peptide

Uniprot ID: P11215

Synonyms: CR-3 alpha chain;ITGAM;ITAM\_HUMAN;MAC1A;Cell surface glycoprotein MAC-1 subunit alpha; MO1A;Mo1, alpha subunit;Integrin alpha-M;Integrin Alpha M;CD11b/CD18;CD11 antigen like family member B;CD11b;CD11 antigen-like family member B;MAC 1;Mac1, alpha subunit; integrin, alpha M (complement component 3 receptor 3 subunit);Neutrophil adherence receptor alpha M subunit;CR3;MAC1;antigen CD11b (p170);SLEB6;CR 3 alpha chain;CR3A; Complement component 3 receptor 3 subunit;Ly-40;Integrin alpha M chain;Integrin subunit alpha M;Neutrophil adherence receptor;Leukocyte adhesion receptor MO1;F730045J24Rik; CD49d;Complement Component Receptor 3 Alpha;Complement receptor type 3, alpha subunit; MGC117044;Macrophage antigen alpha polypeptide;Mac-1a;CR 3 alpha chain (CR3A);Integrin beta 2 alpha subunit;Antigen CD11b p170

### Research Background

Integrin  $\alpha$ M, also designated complement component receptor-3  $\alpha$ , CD11b (p170), macrophage antigen a polypeptide, cell surface glycoprotein Mac-1  $\alpha$  subunit, MAC1A, MO1A and ITGAM) is a cell adhesion molecule that acts as a receptor for cell surface ligands such as intracellular adhesion molecules (ICAMs) or soluble ligands. Integrins are heterodimeric proteins that contain an  $\alpha$  chain and  $\beta$  chain. Integrin  $\alpha$ M combines with the Integrin  $\beta$ 2 to form a leukocyte-specific integrin referred to as macrophage receptor 1 (Mac-1), or inactivated-C3b (iC3b) receptor 3 (CR3). Integrin  $\alpha$ M/ $\beta$ 2 is important in the adherence of neutrophils and monocytes to stimulated endothelium, and also in the phagocytosis of complement coated particles.

**Inhibitor · Natural Compounds · Compound Libraries · Recombinant Proteins**

This product is for Research Use Only · Not for Human or Veterinary or Therapeutic Use

Tel:781-999-4286 E\_mail:info@targetmol.com Address:34 Washington Street,Wellesley Hills,MA 02481