

## Anti-Neprilysin/CD10 Antibody (5M454)

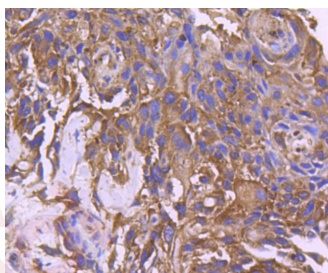
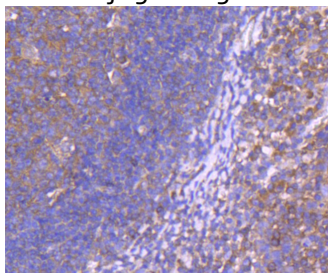
### Product Details

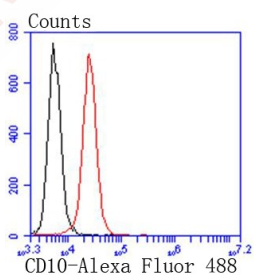
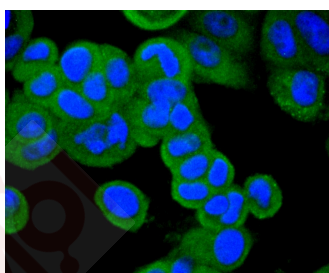
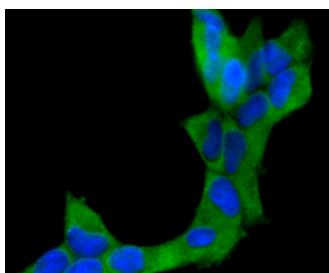
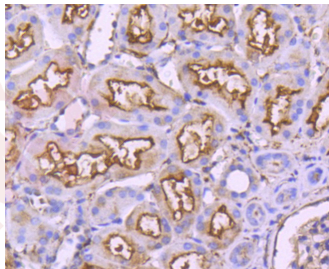
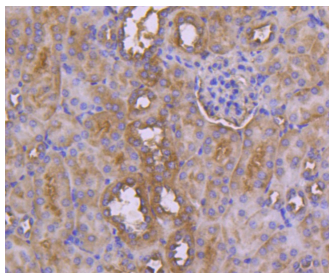
Ig Type:	IgG
Reactivity:	Human,Mouse,Rat
Conjugation:	Unconjugated
Molecular Weight:	Theoretical: 100 kDa.
Clone:	5M454
Purification:	ProA affinity purified

### Applications

#### Verified Activity:

1. Immunohistochemical analysis of paraffin-embedded human tonsil tissue using anti-CD10 antibody. Counter stained with hematoxylin.
2. Immunohistochemical analysis of paraffin-embedded human breast carcinoma tissue using anti-CD10 antibody. Counter stained with hematoxylin.
3. Immunohistochemical analysis of paraffin-embedded mouse kidney tissue using anti-CD10 antibody. Counter stained with hematoxylin.
4. Immunohistochemical analysis of paraffin-embedded human kidney tissue using anti-CD10 antibody. Counter stained with hematoxylin.
5. ICC staining CD10 in 293 cells (green). The nuclear counter stain is DAPI (blue). Cells were fixed in paraformaldehyde, permeabilised with 0.25% Triton X100/PBS.
6. ICC staining CD10 in MCF-7 cells (green). The nuclear counter stain is DAPI (blue). Cells were fixed in paraformaldehyde, permeabilised with 0.25% Triton X100/PBS.
7. Flow cytometric analysis of Jurkat cells with CD10 antibody at 1/50 dilution (red) compared with an unlabelled control (cells without incubation with primary antibody; black). Alexa Fluor 488-conjugated goat anti rabbit IgG was used as the secondary antibody.





Application: FCM, ICC, IHC, WB

Recommended WB: 1:500-1000; IHC: 1:50-200; ICC: 1:50-200; FCM: 1:50-100

### Properties

Stability & Storage: Store at -20°C or -80°C for 12 months. Avoid repeated freeze-thaw cycles.

Shipping: Shipping with blue ice.

### Antigen Details

Immunogen: Recombinant Protein  
Uniprot ID: P08473  
Synonyms: NEP;EPN;CD10;SFE;CALLA;SCA43;CMT2T

---

### Research Background

CD10, also called the common acute lymphoblastic leukemia antigen (CALLA) and neutral endopeptidase (NEP), is a type II integral membrane glycoprotein. CD10 acts as a zinc metalloprotease that cleaves a variety of biologically active peptides including Angiotensins I and II. It is expressed on early B and T lymphoid precursors, B blasts, some granulocytes, bone marrow stromal cells and certain epithelial cells including some tumor cell lines. CD10 is used as a marker of common acute lymphocytic leukemias and some lymphomas.

**Inhibitor · Natural Compounds · Compound Libraries · Recombinant Proteins**

This product is for Research Use Only · Not for Human or Veterinary or Therapeutic Use

Tel:781-999-4286 E\_mail:info@targetmol.com Address:34 Washington Street,Wellesley Hills,MA 02481