

## Anti-Neprilysin/CD10 Antibody (4F847)

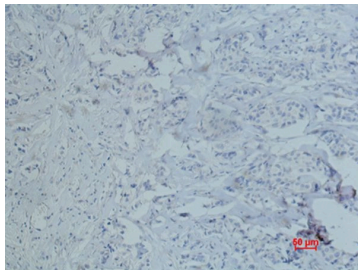
### Product Details

|              |                 |
|--------------|-----------------|
| Ig Type:     | IgG1            |
| Reactivity:  | Human,Mouse,Rat |
| Conjugation: | Unconjugated    |
| Clone:       | 4F847           |

### Applications

Verified Activity:

1. Immunohistochemical analysis of paraffin-embedded human-breast-cancer using antibody diluted at 1:50.



|              |               |
|--------------|---------------|
| Application: | IHC           |
| Recommended  | IHC: 1:50-200 |

### Properties

|                      |   |
|----------------------|---|
| Stability & Storage: | Store at -20°C or -80°C for 12 months. Avoid repeated freeze-thaw cycles. |
| Shipping:            | Shipping with blue ice.   |

### Antigen Details

|             |                                    |
|-------------|------------------------------------|
| Immunogen:  | A synthesized peptide              |
| Uniprot ID: | P08473                             |
| Synonyms:   | CD10;NEP;CMT2T;SCA43;EPN;SFE;CALLA |

**Inhibitor · Natural Compounds · Compound Libraries · Recombinant Proteins**

This product is for Research Use Only. Not for Human or Veterinary or Therapeutic Use

Tel:781-999-4286 E\_mail:info@targetmol.com Address:34 Washington Street,Wellesley Hills,MA 02481