

## Anti-CCR7 Antibody (8C836)

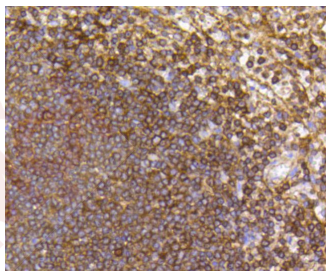
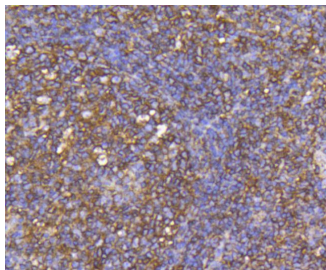
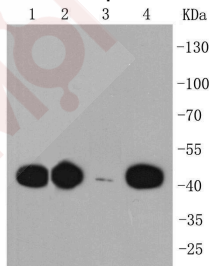
### Product Details

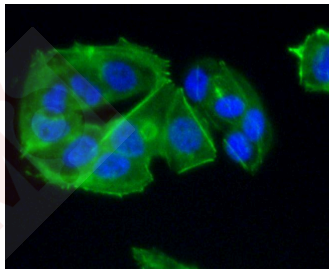
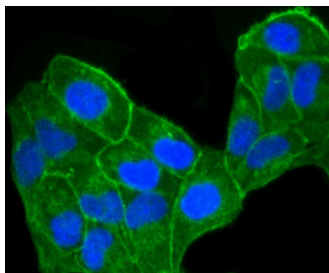
Ig Type:	IgG
Reactivity:	Human,Mouse,Rat
Conjugation:	Unconjugated
Molecular Weight:	Theoretical: 43 kDa.
Clone:	8C836
Purification:	ProA affinity purified

### Applications

#### Verified Activity:

1. Western blot analysis of CCR7 on different cell lysates using anti-CCR7 antibody at 1/1,000 dilution. Positive control: Lane 1: MCF-7, Lane 2: PC-12, Lane 3: Daudi, Lane 4: Jurkat.
2. Immunohistochemical analysis of paraffin-embedded human tonsil tissue using anti-CCR7 antibody. Counter stained with hematoxylin.
3. Immunohistochemical analysis of paraffin-embedded human spleen tissue using anti-CCR7 antibody. Counter stained with hematoxylin.
4. ICC staining CCR7 in Hela cells (green). The nuclear counter stain is DAPI (blue). Cells were fixed in paraformaldehyde, permeabilised with 0.25% Triton X100/PBS.
5. ICC staining CCR7 in MCF-7 cells (green). The nuclear counter stain is DAPI (blue). Cells were fixed in paraformaldehyde, permeabilised with 0.25% Triton X100/PBS.





Application: ICC/IF,IHC,IP,WB

Recommended WB: 1:1000-5000; IHC: 1:50-200; ICC/IF: 1:50-200

### Properties

Stability & Storage: Store at -20°C or -80°C for 12 months. Avoid repeated freeze-thaw cycles.

Shipping: Shipping with blue ice.

### Antigen Details

Immunogen: Recombinant Protein

Uniprot ID: P32248

Synonyms: CC CKR 7; Chemokine receptor 7-like protein; BLR 2; MIP 3 beta receptor; CCR 7; Chemokine C C receptor 7; Chemokine C C motif receptor 7; EB11; CC chemokine receptor 7; BLR2; MIP3 beta Receptor; C C chemokine receptor type 7; EBV Induced G Protein Coupled Receptor 1; Ebi1h; EVI 1; Epstein Barr virus induced gene 1; CD 197; Epstein Barr virus induced G protein coupled receptor; EB1 1; CDW197; MGC108519; C C CKR 7; EVI1; CD197; CC chemokine receptor type 7; Lymphocyte Specific G Protein Coupled Peptide Receptor; CCCKR7; CCR7; CD197 antigen

### Research Background

C-C or ?? chemokine family members are characterized by a pair of adjacent cysteine residues and serve as potent chemoattractants and activators of monocytes and T cells. C-C chemokine receptor family members include CKR-1, CKR-2A, CKR-2B, CKR-3, CKR-4, CKR-5, CKR-6, CKR-7, CKR-8, CKR-9, CKR-10 and the Duffy blood group antigen. Each of these receptors are G protein-coupled, seven pass transmembrane domain proteins whose major physiological role is to function in the chemotaxis of T cells and phagocytic cells to areas of inflammation. However, this receptor family has also been shown to facilitate viral infection. CKR-7 (C-C chemokine receptor type 7), also known as CCR7, CMKBR7, EB11 or EVI1, is a 378 amino acid multi-pass membrane protein that belongs to the CC-chemokine receptor family. Expressed in activated B- and T-lymphocytes, as well as in various lymphoid tissues, CKR-7 functions as a receptor for MIP-3?? and is thought to be involved in mediating normal lymphocyte function.

**Inhibitor · Natural Compounds · Compound Libraries · Recombinant Proteins**

This product is for Research Use Only · Not for Human or Veterinary or Therapeutic Use

Tel:781-999-4286 E\_mail:info@targetmol.com Address:34 Washington Street,Wellesley Hills,MA 02481