

Anti-Phospho-CCR5 (Ser349) Polyclonal Antibody 2

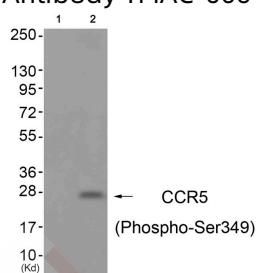
Product Details

Ig Type:	IgG
Reactivity:	Human
Conjugation:	Unconjugated
Molecular Weight:	Actual: 40 kDa.
Purification:	Antibodies were produced by immunizing rabbits with synthetic phosphopeptide and KLH conjugates. Antibodies were purified by affinity-chromatography using epitope-specific phosphopeptide. Non-phospho specific antibodies were removed by chromatography using non-phosphopeptide.

Applications

Verified Activity:

1. Western blot analysis of extracts from A549 cells (Lane 2), using CCR5 (Phospho-Ser349) Antibody TMAC-00642. The lane on the left is treated with antigen-specific peptide.



Application:	WB
Recommended	WB: 1:500-1000

Properties

Stability & Storage:	Store at -20°C or -80°C for 12 months. Avoid repeated freeze-thaw cycles.
Shipping:	Shipping with blue ice.

Antigen Details

Immunogen:	Peptide sequence around phosphorylation site of Serine 349 (E-I-S(p)-V-G) derived from Human CCR5
Antigen Species:	human
Uniprot ID:	P51681
Synonyms:	CCR5 (p-S349);p-CCR5 (S349);p-CCR5 (Ser349);CCR5 (p-Ser349)

Research Background

Receptor for a number of inflammatory CC-chemokines including MIP-1-alpha, MIP-1-beta and RANTES and subsequently transduces a signal by increasing the intracellular calcium ion level. May play a role in the control of granulocytic lineage proliferation or differentiation. Acts as a coreceptor (CD4 being the primary receptor) for HIV-1 R5 isolates.

Inhibitor · Natural Compounds · Compound Libraries · Recombinant Proteins

This product is for Research Use Only · Not for Human or Veterinary or Therapeutic Use

Tel:781-999-4286 E_mail:info@targetmol.com Address:34 Washington Street,Wellesley Hills,MA 02481