

Anti-CCR2 Antibody (1X499)

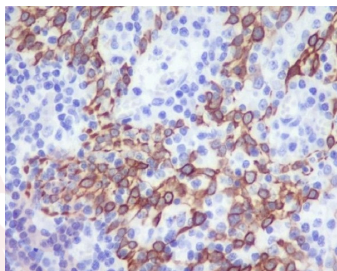
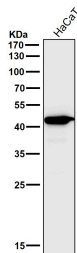
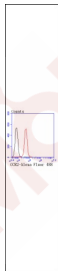
Product Details

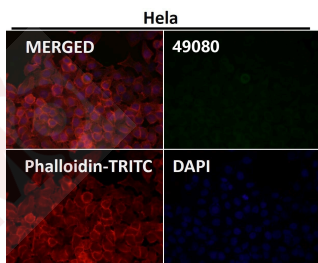
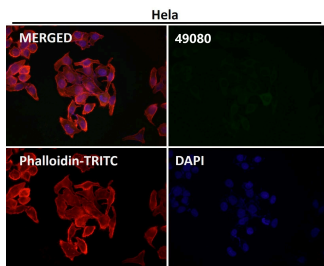
Ig Type:	IgG
Reactivity:	Human,Mouse
Conjugation:	Unconjugated
Molecular Weight:	Theoretical: 42 kDa.
Clone:	1X499
Purification:	Affinity-chromatography

Applications

Verified Activity:

1. Flow cytometric analysis of K562 cells with CCR2 antibody at 1/50 dilution (red) compared with an unlabelled control (cells without incubation with primary antibody; black). Alexa Fluor 488-conjugated goat anti rabbit IgG was used as the secondary antibody.
2. All lanes use the Antibody at 1:1K dilution for 1 hour at room temperature.
3. Immunohistochemical analysis of paraffin-embedded human tonsil, using CCR2/CCR2 Antibody.
4. Immunofluorescent analysis using the Antibody at 1:50 dilution.
5. Immunofluorescent analysis using the Antibody at 1:50 dilution.





Application: FCM,IHC,IP,WB

Recommended WB: 1:1000-5000; IHC: 1:50-200; IP: 1:50; FCM: 1:100

Properties

Stability & Storage: Store at 2°C-8°C for 1 month. Store at -20°C or -80°C for 12 months. Avoid repeated freeze-thaw cycles.

Shipping: Shipping with blue ice.

Antigen Details

Immunogen: A synthesized peptide: human CCR2/CKR2

Antigen Species: human

Uniprot ID: P41597

Synonyms: CCR-2;CMKBR2;C-C CKR-2;MCP-1-R;CCR2

Research Background

Receptor for the MCP-1, MCP-3 and MCP-4 chemokines. Transduces a signal by increasing the intracellular calcium ions level. Alternative coreceptor with CD4 for HIV-1 infection.

Inhibitor · Natural Compounds · Compound Libraries · Recombinant Proteins

This product is for Research Use Only · Not for Human or Veterinary or Therapeutic Use

Tel:781-999-4286 E_mail:info@targetmol.com Address:34 Washington Street,Wellesley Hills,MA 02481