

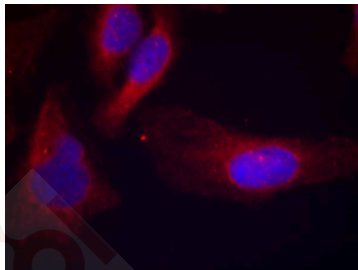
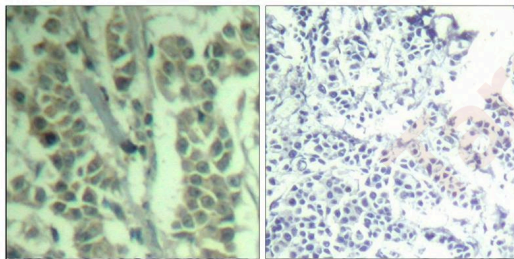
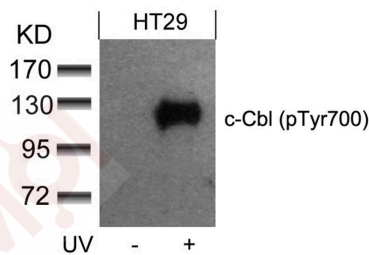
Anti-Phospho-CBL (Tyr700) Polyclonal Antibody

Product Details

Ig Type:	IgG
Reactivity:	Human
Conjugation:	Unconjugated
Purification:	Antibodies were produced by immunizing rabbits with synthetic phosphopeptide and KLH conjugates. Antibodies were purified by affinity-chromatography using epitope-specific phosphopeptide. Non-phospho specific antibodies were removed by chromatography using non-phosphopeptide.

Applications

- Verified Activity:
1. Western blot analysis of extracts from HT29 cells untreated or treated with UV using c-Cbl (phospho-Tyr700) Antibody TMAC-00638.
 2. Immunohistochemical analysis of paraffin-embedded human breast carcinoma tissue using c-Cbl (Phospho-Tyr700) Antibody TMAC-00638(left) or the same antibody preincubated with blocking peptide (right).
 3. Immunofluorescence staining of methanol-fixed Hela cells using c-Cbl (phospho-Tyr700) Antibody TMAC-00638.



Application: IF,IHC,WB

A DRUG SCREENING EXPERT

Properties

Stability & Storage: Store at 2°C-8°C for 1 month. Store at -20°C or -80°C for 12 months. Avoid repeated freeze-thaw cycles.

Shipping: Shipping with blue ice.

Antigen Details

Immunogen: Peptide sequence around phosphorylation site of tyrosine 770 (T-E-Y(p)-M-T) derived from Human c-Cbl

Antigen Species: human

Uniprot ID: P22681

Synonyms: Proto-oncogene c-Cbl;p-CBL (Tyr700);CBL2;CBL (p-Tyr700);RNF55;p-CBL (Y700);CBL (p-Y700)

Research Background

Participates in signal transduction in hematopoietic cells. Adapter protein that functions as a negative regulator of many signaling pathways that start from receptors at the cell surface. Acts as an E3 ubiquitin-protein ligase, which accepts ubiquitin from specific E2 ubiquitin-conjugating enzymes, and then transfers it to substrates promoting their degradation by the proteasome. Recognizes activated receptor tyrosine kinases, including PDGFA, EGF and CSF1, and terminates signaling.

Inhibitor · Natural Compounds · Compound Libraries · Recombinant Proteins

This product is for Research Use Only · Not for Human or Veterinary or Therapeutic Use

Tel:781-999-4286 E_mail:info@targetmol.com Address:34 Washington Street,Wellesley Hills,MA 02481