

Anti-CBL Antibody (8B374)

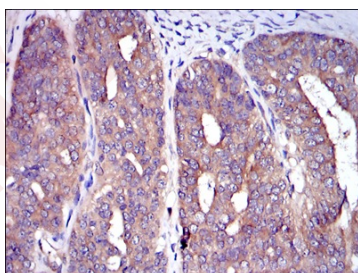
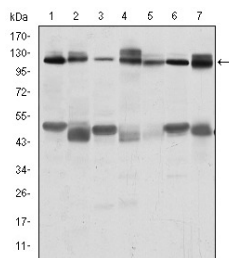
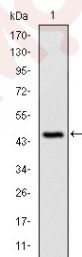
Product Details

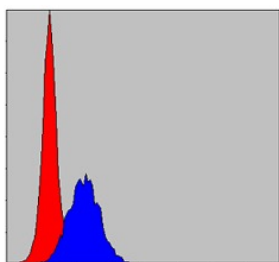
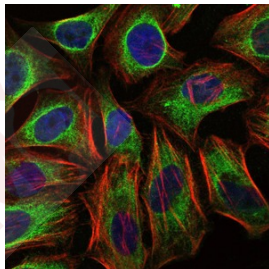
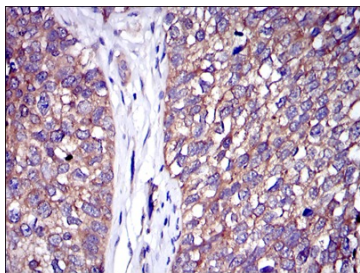
Reactivity:	Human, Mouse, Rat
Conjugation:	Unconjugated
Molecular Weight:	Theoretical: 120 kDa.
Clone:	8B374
Purification:	ProA affinity purified

Applications

Verified Activity:

1. Western blot analysis of CBL on human CBL recombinant protein using anti-CBL antibody at 1/1,000 dilution.
2. Western blot analysis of CBL on different cell lysates using anti-CBL antibody at 1/1,000 dilution. Positive control: Lane 1: RAJI, Lane 2: RAW264.7, Lane 3: K562, Lane 4: SKBR-3, Lane 5: 3T3-L1, Lane 6: THP-1, Lane 7: PC-12.
3. Immunohistochemical analysis of paraffin-embedded ovarian cancer tissue using anti-CBL antibody. Counter stained with hematoxylin.
4. Immunohistochemical analysis of paraffin-embedded bladder cancer tissue using anti-CBL antibody. Counter stained with hematoxylin.
5. ICC staining CBL (green) and actin filaments (red) in Hela cells. The nuclear counter stain is DAPI (blue). Cells were fixed in paraformaldehyde, permeabilised with 0.25% Triton X100/PBS.
6. Flow cytometric analysis of MCF-7 cells with CBL antibody at 1/100 dilution (blue) compared with an unlabelled control (cells without incubation with primary antibody; red).





Application: FCM, ICC, IHC, WB

Recommended WB: 1:500-1000; IHC: 1:50-200; ICC: 1:100-500; FCM: 1:100-200

Properties

Stability & Storage: Store at -20°C or -80°C for 12 months. Avoid repeated freeze-thaw cycles.

Shipping: Shipping with blue ice.

Antigen Details

Immunogen: Recombinant Protein

Uniprot ID: P22681

Synonyms: RNF55; CBL2; Proto-oncogene c-Cbl

Inhibitor · Natural Compounds · Compound Libraries · Recombinant Proteins

This product is for Research Use Only · Not for Human or Veterinary or Therapeutic Use

Tel: 781-999-4286 E_mail: info@targetmol.com Address: 34 Washington Street, Wellesley Hills, MA 02481
