

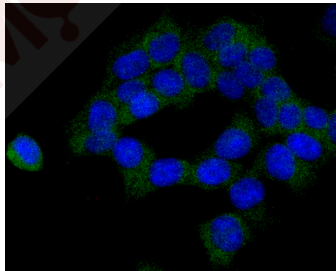
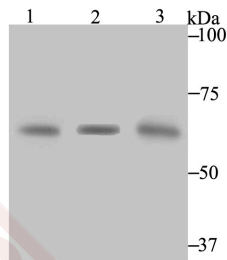
Anti-CBS Antibody (7N696)

Product Details

Ig Type:	IgG
Reactivity:	Human
Conjugation:	Unconjugated
Molecular Weight:	Theoretical: 61 kDa.
Clone:	7N696
Purification:	ProA affinity purified

Applications

- Verified Activity:
- Western blot analysis of CBS on different lysates using anti-CBS antibody at 1/1,000 dilution. Positive control: Lane 1: 293, Lane 2: 293, Lane 3: human liver tissue.
 - ICC staining CBS in 293T cells (green). The nuclear counter stain is DAPI (blue). Cells were fixed in paraformaldehyde, permeabilised with 0.25% Triton X100/PBS.



Application:	ICC, WB
Recommended	WB: 1:500-2000; ICC: 1:50-100

Properties

- Stability & Storage: Store at -20°C or -80°C for 12 months. Avoid repeated freeze-thaw cycles.
- Shipping: Shipping with blue ice.

Antigen Details

Immunogen: Recombinant Protein: human CBS aa 400-550
Antigen Species: human
Uniprot ID: P35520
Synonyms: Cystathionine beta-synthase;Serine sulfhydrase;Beta-thionase;CBS

Research Background

Strongly expressed in human liver and pancreas, with weaker expression in heart and brain, the cytoplasmic protein cystathionine b-synthase (CBS) operates in the first step of homocysteine transulfuration. CBS, which belongs to the cysteine synthase/cystathionine b-synthase family of proteins, catalyzes the formation of cystathionine from the thrombogenic amino acid homocysteine using pyridoxal phosphate cofactor. Allosteric activation by adenosyl-methionine regulates CBS activity. Deficiencies in CBS are associated with homocystinuria, a recessively inherited error in sulfur amino acid metabolism that affects many organs and tissues. Symptoms of homocystinuria include arteriosclerosis, thrombosis, dislocated optic lenses, mental retardation and skeletal abnormalities.

Inhibitor · Natural Compounds · Compound Libraries · Recombinant Proteins

This product is for Research Use Only · Not for Human or Veterinary or Therapeutic Use

Tel:781-999-4286 E_mail:info@targetmol.com Address:34 Washington Street,Wellesley Hills,MA 02481