

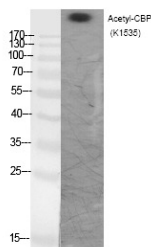
## Anti-Acetyl-CREBBP (Lys1535) Polyclonal Antibody

### Product Details

Ig Type:	IgG
Reactivity:	Human,Mouse,Rat
Conjugation:	Unconjugated
Molecular Weight:	Actual: 265 kDa.
Purification:	The antibody was affinity-purified from rabbit antiserum by affinity-chromatography using epitope-specific immunogen.

### Applications

Verified Activity: 1. Western Blot analysis of various cells using Acetyl-CBP (K1535) Polyclonal Antibody.



Application: ELISA,IHC,WB  
Recommended WB: 1:500-2000; IHC: 1:100-300; ELISA: 1:20000

### Properties

Stability & Storage: Store at -20°C or -80°C for 12 months. Avoid repeated freeze-thaw cycles.  
Shipping: Shipping with blue ice.

### Antigen Details

Immunogen: A synthesized acetylpeptide: human CBP around the acetylation site of K1535  
Antigen Species: human  
Synonyms: Ac-CREBBP (K1535);Ac-CREBBP (Lys1535);CREBBPK1535-acetylated;Ac-CREBBPK1535; CREBBPK1535ac;Acetyl-CREBBP (K1535)

**Inhibitor · Natural Compounds · Compound Libraries · Recombinant Proteins**

This product is for Research Use Only. Not for Human or Veterinary or Therapeutic Use

Tel:781-999-4286 E\_mail:info@targetmol.com Address:34 Washington Street,Wellesley Hills,MA 02481