

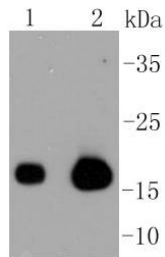
Anti-Caveolin 3 Antibody (8Q2)

Product Details

Ig Type:	IgG
Reactivity:	Human,Mouse,Rat
Conjugation:	Unconjugated
Molecular Weight:	Theoretical: 17 kDa.
Clone:	8Q2
Purification:	ProA affinity purified

Applications

Verified Activity: 1. Western blot analysis of Caveolin-3 on different lysates using anti-Caveolin-3 antibody at 1/1,000 dilution. Positive control: Lane 1: Mouse heart, Lane 2: Mouse skeletal muscle.



Application:	IP,WB
Recommended	WB: 1:1000-5000

Properties

Stability & Storage: Store at -20°C or -80°C for 12 months. Avoid repeated freeze-thaw cycles.
Shipping: Shipping with blue ice.

Antigen Details

Immunogen:	Recombinant Protein
Uniprot ID:	P56539
Synonyms:	MGC126100;Caveolin-3;Caveolin3;M-caveolin;MGC126101;OTTHUMP00000115603;CAV3_HUMAN;OTTHUMP00000207105;VIP21;CAV3;LQT9;MGC126129;LGMD1C;VIP 21

Research Background

Caveolae (also known as plasmalemmal vesicles) are 50-100 nm flask-shaped membranes that represent a subcompartment of the plasma membrane. On the basis of morphological studies, caveolae have been implicated to function in the transcytosis of various macromolecules (including LDL) across capillary endothelial cells, uptake of small molecules via potocytosis and the compartmentalization of certain signaling molecules including G protein-coupled receptors. Three proteins, caveolin-1, caveolin-2 and caveolin-3, have been identified as principal components of caveolae. Two forms of caveolin-1, designated alpha and beta, share a distinct but overlapping cellular distribution and differ by an amino terminal 31 amino acid sequence which is absent from the beta isoform. Caveolin-1 shares 31% identity with caveolin-2 and 65% identity with caveolin-3 at the amino acid level.

Functionally, the three proteins differ in their interactions with heterotrimeric G protein isoforms.

Inhibitor · Natural Compounds · Compound Libraries · Recombinant Proteins

This product is for Research Use Only · Not for Human or Veterinary or Therapeutic Use

Tel:781-999-4286 E_mail:info@targetmol.com Address:34 Washington Street,Wellesley Hills,MA 02481