

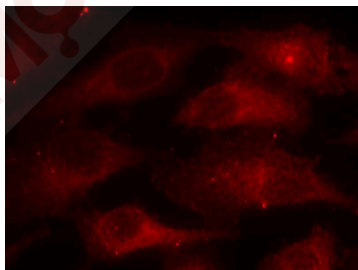
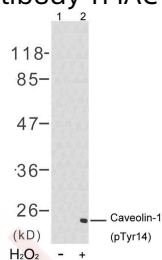
Anti-Phospho-CAV1 (Tyr14) Polyclonal Antibody

Product Details

Ig Type:	IgG
Reactivity:	Human,Mouse,Rat
Conjugation:	Unconjugated
Purification:	Antibodies were produced by immunizing rabbits with synthetic phosphopeptide and KLH conjugates. Antibodies were purified by affinity-chromatography using epitope-specific phosphopeptide. Non-phospho specific antibodies were removed by chromatography using non-phosphopeptide.

Applications

- Verified Activity:
- Western blot analysis of extracts from 3T3 cells untreated (lane 1) or treated with H₂O₂ (lane 2) using Caveolin-1(Phospho-Tyr14) Antibody TMAC-00624.
 - Immunofluorescence staining of methanol-fixed Hela cells using Caveolin-1(Phospho-Tyr14) Antibody TMAC-00624.



Application: IF,WB

Properties

Stability & Storage:	Store at 2°C-8°C for 1 month. Store at -20°C or -80°C for 12 months. Avoid repeated freeze-thaw cycles.
Shipping:	Shipping with blue ice.

Antigen Details

Immunogen:	Peptide sequence around phosphorylation site of tyrosine 14 (H-L-Y(p)-T-V) derived from Human CAVEOLIN-1
Antigen Species:	human
Uniprot ID:	Q03135
Synonyms:	CAV1 (p-Tyr14);p-CAV1 (Y14);p-CAV1 (Tyr14);CAV1 (p-Y14)

Research Background

The scaffolding protein encoded by Caveolin-1 is the main component of the caveolae plasma membranes found in most cell types. The protein links integrin subunits to the tyrosine kinase FYN, an initiating step in coupling integrins to the Ras-ERK pathway and promoting cell cycle progression. The gene is a tumor suppressor gene candidate and a negative regulator of the Ras-p42/44 MAP kinase cascade. CAV1 and CAV2 are located next to each other on chromosome 7 and express colocalizing proteins that form a stable hetero-oligomeric complex. By using alternative initiation codons in the same reading frame, two isoforms (a and beta) are encoded by a single transcript from this gene.

Inhibitor · Natural Compounds · Compound Libraries · Recombinant Proteins

This product is for Research Use Only · Not for Human or Veterinary or Therapeutic Use

Tel:781-999-4286 E_mail:info@targetmol.com Address:34 Washington Street,Wellesley Hills,MA 02481