

## Anti-Cathepsin B Antibody (8S344)

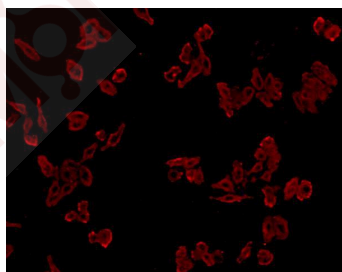
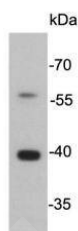
### Product Details

Reactivity:	Human,zebrafish
Conjugation:	Unconjugated
Molecular Weight:	Theoretical: 38 kDa.
Clone:	8S344
Purification:	ProA affinity purified

### Applications

#### Verified Activity:

1. Western blot analysis of Cathepsin B on SW480 cell lysate using anti-Cathepsin B antibody at 1/5,000 dilution.
2. ICC staining Cathepsin B in HepG2 cells (red). Cells were fixed in paraformaldehyde, permeabilised with 0.25% Triton X100/PBS.



Application:	ICC,IHC,WB
Recommended	WB: 1:5000-10000; ICC: 1:200-500

### Properties

Stability & Storage:	Store at -20°C or -80°C for 12 months. Avoid repeated freeze-thaw cycles.
Shipping:	Shipping with blue ice.

### Antigen Details

Immunogen: Recombinant Protein

Uniprot ID: P07858

Synonyms: cathepsin B

---

### Research Background

Cathepsin B is an enzymatic protein belonging to the peptidase (or protease) families. In humans, it is coded by the CTSB gene. A wide array of diseases results in elevated levels of cathepsin B, which causes numerous pathological processes including cell death, inflammation, and production of toxic peptides. Focusing on neurological diseases, cathepsin B gene knockout studies in an epileptic rodent model have shown cathepsin B causes a significant amount of the apoptotic cell death that occurs as a result of inducing epilepsy. Mutations in the CTSB gene have been linked to tropical pancreatitis, a form of chronic pancreatitis.

**Inhibitor · Natural Compounds · Compound Libraries · Recombinant Proteins**

This product is for Research Use Only · Not for Human or Veterinary or Therapeutic Use

Tel:781-999-4286 E\_mail:info@targetmol.com Address:34 Washington Street,Wellesley Hills,MA 02481