

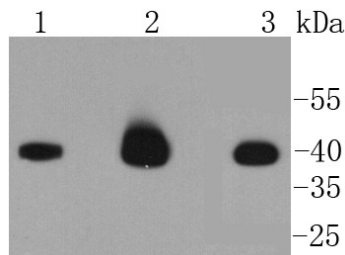
## Anti-CASP9 Antibody (2J521)

## Product Details

Ig Type:	IgG
Reactivity:	Human,Mouse
Conjugation:	Unconjugated
Molecular Weight:	Theoretical: 46/39/37/35 kDa.
Clone:	2J521
Purification:	ProA affinity purified

## Applications

Verified Activity: 1. Western blot analysis of Caspase-9 on different lysates using anti-Caspase-9 antibody at 1/1,000 dilution. Positive control: Lane 1: Jurkat, Lane 2: HeLa, Lane 3: C2C12.



Application:	IP,WB
Recommended	WB: 1:1000-2000

## Properties

Stability & Storage:	Store at -20°C or -80°C for 12 months. Avoid repeated freeze-thaw cycles.
Shipping:	Shipping with blue ice.

## Antigen Details

Immunogen:	Recombinant Protein
Uniprot ID:	P55211
Synonyms:	Caspase9;CASP-9;EC 3.4.22.62;ICE-like apoptotic protease 6;ICE-LAP6;Caspase-9;APAF-3;MCH6;Apoptotic protease Mch-6;Apoptotic protease-activating factor 3

## Research Background

A unique family of cysteine proteases has been described that differs in sequence, structure and substrate specificity from any previously described protease family. This family, Ced-3/caspase-1, is comprised of caspase-1, caspase-2, caspase-3, caspase-4, caspase-6, caspase-7 (also designated Mch3, ICE-LAP3 or CMH-1), caspase-9 and caspase-10. Ced-3/caspase-1 family members function as key components of the apoptotic machinery and act to destroy specific target proteins which are critical to cellular longevity. Poly(ADP-ribose) polymerase plays an integral role in surveying for DNA mutations and double strand breaks. Caspase-3, caspase-7 and caspase-9, but not caspase-1, have been shown to cleave the nuclear protein PARP into an apoptotic fragment. Caspase-6, but not caspase-3, has been shown to cleave the nuclear lamins, which are critical to maintaining the integrity of the nuclear envelope and

## A DRUG SCREENING EXPERT

---

cellular morphology. Caspase-10 has been shown to activate caspase-3 and caspase-7 in response to apoptotic stimuli.

**Inhibitor · Natural Compounds · Compound Libraries · Recombinant Proteins**

This product is for Research Use Only · Not for Human or Veterinary or Therapeutic Use

Tel: 781-999-4286 E\_mail: [info@targetmol.com](mailto:info@targetmol.com) Address: 34 Washington Street, Wellesley Hills, MA 02481