

## Anti-Caspase-8 Antibody (8B784)

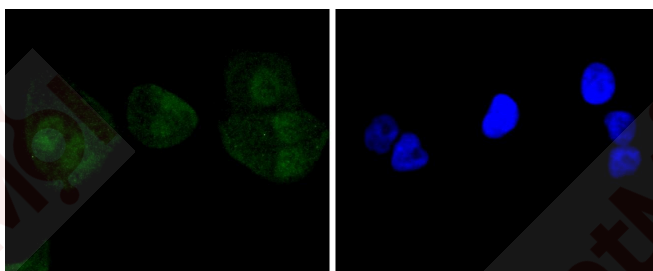
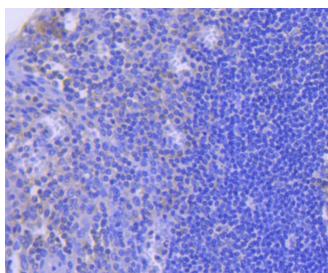
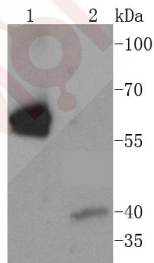
### Product Details

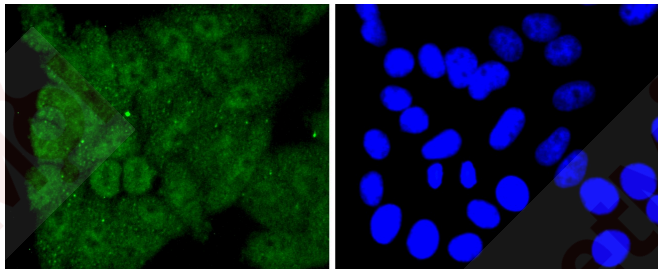
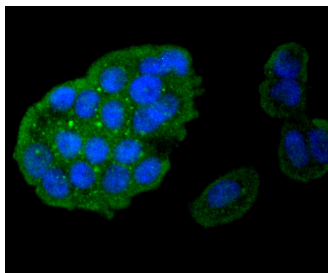
Ig Type:	IgG
Reactivity:	Human
Conjugation:	Unconjugated
Molecular Weight:	Theoretical: 55 kDa.
Clone:	8B784
Purification:	ProA affinity purified

### Applications

#### Verified Activity:

1. Western blot analysis of Caspase-8 on different lysates using anti-Caspase-8 antibody at 1/1,000 dilution. Positive control: Lane 1: Jurkat, Lane 2: Hela.
2. Immunohistochemical analysis of paraffin-embedded human tonsil tissue using anti-Caspase-8 antibody. Counter stained with hematoxylin.
3. ICC staining Caspase-8 in Hela cells (green). The nuclear counter stain is DAPI (blue). Cells were fixed in paraformaldehyde, permeabilised with 0.25% Triton X100/PBS.
4. ICC staining Caspase-8 in MCF-7 cells (green). The nuclear counter stain is DAPI (blue). Cells were fixed in paraformaldehyde, permeabilised with 0.25% Triton X100/PBS.
5. ICC staining Caspase-8 in HepG2 cells (green). The nuclear counter stain is DAPI (blue). Cells were fixed in paraformaldehyde, permeabilised with 0.25% Triton X100/PBS.





Application: ICC/IF,IHC,WB

Recommended WB: 1:1000-5000; IHC: 1:50-200; ICC/IF: 1:50-200

### Properties

Stability & Storage: Store at -20°C or -80°C for 12 months. Avoid repeated freeze-thaw cycles.

Shipping: Shipping with blue ice.

### Antigen Details

Immunogen: Recombinant Protein

Uniprot ID: Q14790

Synonyms: MACH;Caspase 8;OTTHUMP00000165062;FLJ17672;MCH 5;OTTHUMP00000163720;ALPS2B; OTTHUMP00000206582;ICE like apoptotic protease 5;OTTHUMP00000163717; OTTHUMP00000163724;MACH alpha 1/2/3 protein;MCH5;Amyotrophic lateral sclerosis 2 chromosomal region candidate gene 12 protein;FADD Homologous ICE/CED3 Like Protease; FADD homologous ICE/CED 3 like protease;Apoptosis related cysteine peptidase;MGC78473; Apoptotic cysteine protease;Caspase 8 apoptosis related cysteine peptidase;MORT1 associated CED 3 homolog;Caspase8;OTTHUMP00000165064;CAP4;CAP 4;CASP 8;Apoptotic protease Mch 5;CED 3;OTTHUMP00000165063;CASP8;Caspase-8 subunit p18;OTTHUMP00000163725;MACH beta 1/2/3/4 protein;FLICE;FADD-homologous ICE/ced-3-like protease;OTTHUMP00000206552; FADD Like ICE;FADD-like ICE;Apoptotic protease Mch-5

### Research Background

Initiator caspases, which include caspase-8, activate effector caspases by cleaving inactive forms of effector caspases. In the activation cascade responsible for apoptosis induced by TNFRSF1A and mediated by TNFRSF6/FAS, caspase-8 is the most upstream protease. Caspase-8 binds to adaptor molecule FADD, forming an aggregate referred to as death-inducing signaling complex (DISC), which activates caspase-8. The activated protein is released from the complex and further activates downstream apoptotic proteases. Caspase-8, which is a heterodimer consisting of two subunits (p18 and p10), is widely expressed, but is detected at highest levels in peripheral blood leukocytes (PBLs), thymus, liver and spleen. Defects in CASP8, the gene encoding for caspase-8, may cause CASP8D (caspase-8 deficiency disorder), which is characterized by splenomegaly and CD95-induced apoptosis of PBLs, may lead to immunodeficiency due to defects in T lymphocyte, NK cell and B lymphocyte activation.

**Inhibitor · Natural Compounds · Compound Libraries · Recombinant Proteins**

This product is for Research Use Only · Not for Human or Veterinary or Therapeutic Use

Tel:781-999-4286 E\_mail:info@targetmol.com Address:34 Washington Street,Wellesley Hills,MA 02481