

Anti-Caspase-8 Antibody (4B478)

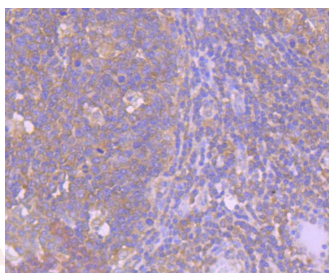
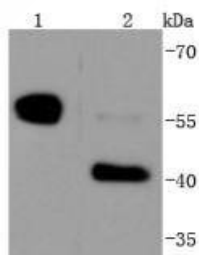
Product Details

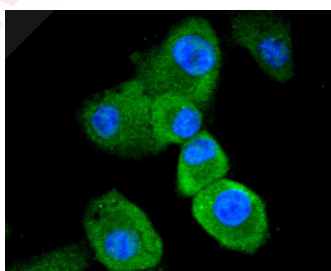
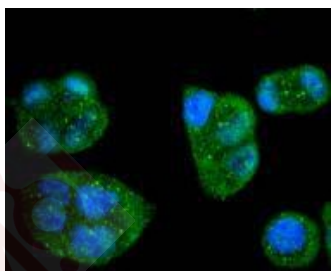
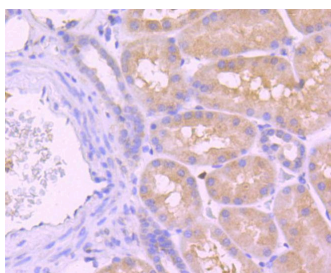
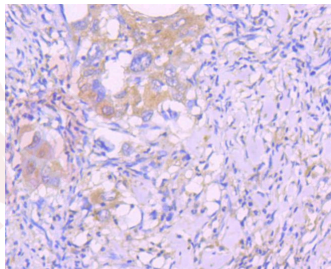
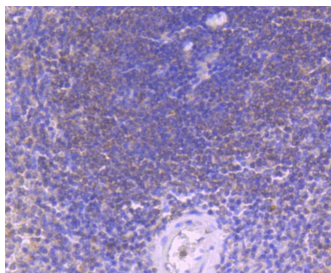
Ig Type:	IgG
Reactivity:	Human
Conjugation:	Unconjugated
Molecular Weight:	Theoretical: 55/46 kDa.
Clone:	4B478
Purification:	ProA affinity purified

Applications

Verified Activity:

1. Western blot analysis of Caspase-8 on different lysates using anti-Caspase-8 antibody at 1/1,000 dilution. Positive control: Lane 1: Jurkat, Lane 2: Hela.
2. Immunohistochemical analysis of paraffin-embedded human tonsil tissue using anti-Caspase-8 antibody. Counter stained with hematoxylin.
3. Immunohistochemical analysis of paraffin-embedded human spleen tissue using anti-Caspase-8 antibody. Counter stained with hematoxylin.
4. Immunohistochemical analysis of paraffin-embedded human lung cancer tissue using anti-Caspase-8 antibody. Counter stained with hematoxylin.
5. Immunohistochemical analysis of paraffin-embedded human kidney tissue using anti-Caspase-8 antibody. Counter stained with hematoxylin.
6. ICC staining Caspase-8 in Hela cells (green). The nuclear counter stain is DAPI (blue). Cells were fixed in paraformaldehyde, permeabilised with 0.25% Triton X100/PBS.
7. ICC staining Caspase-8 in A549 cells (green). The nuclear counter stain is DAPI (blue). Cells were fixed in paraformaldehyde, permeabilised with 0.25% Triton X100/PBS.





Application: ICC/IF,IHC,WB

Recommended WB: 1:1000-2000; IHC: 1:50-200; ICC/IF: 1:50-200

Properties

Stability & Storage: Store at -20°C or -80°C for 12 months. Avoid repeated freeze-thaw cycles.

Shipping: Shipping with blue ice.

Antigen Details

Immunogen: Recombinant Protein

Uniprot ID: Q14790

Synonyms:

CASP 8;Caspase 8 apoptosis related cysteine peptidase;FADD-like ICE;FADD homologous ICE/CED 3 like protease;MGC78473;FADD Like ICE;ALPS2B;Caspase8;OTTHUMP00000206552; FLICE;Apoptosis related cysteine peptidase;Caspase 8;CAP 4;FLJ17672;FADD Homologous ICE/CED3 Like Protease;MCH 5;OTTHUMP00000163717;Apoptotic protease Mch 5;FADD-homologous ICE/ced-3-like protease;OTTHUMP00000165064;ICE like apoptotic protease 5; MACH beta 1/2/3/4 protein;CASP8;OTTHUMP00000165063;MORT1 associated CED 3 homolog; CED 3;MACH alpha 1/2/3 protein;MACH;OTTHUMP00000206582;OTTHUMP00000163724; Amyotrophic lateral sclerosis 2 chromosomal region candidate gene 12 protein; OTTHUMP00000163720;OTTHUMP00000165062;Apoptotic cysteine protease;Apoptotic protease Mch-5;OTTHUMP00000163725;CAP4;Caspase-8 subunit p18;MCH5

Research Background

Initiator caspases, which include caspase-8, activate effector caspases by cleaving inactive forms of effector caspases. In the activation cascade responsible for apoptosis induced by TNFRSF1A and mediated by TNFRSF6/FAS, caspase-8 is the most upstream protease. Caspase-8 binds to adaptor molecule FADD, forming an aggregate referred to as death-inducing signaling complex (DISC), which activates caspase-8. The activated protein is released from the complex and further activates downstream apoptotic proteases. Caspase-8, which is a heterodimer consisting of two subunits (p18 and p10), is widely expressed, but is detected at highest levels in peripheral blood leukocytes (PBLs), thymus, liver and spleen. Defects in CASP8, the gene encoding for caspase-8, may cause CASP8D (caspase-8 deficiency disorder), which is characterized by splenomegaly and CD95-induced apoptosis of PBLs, may lead to immunodeficiency due to defects in T lymphocyte, NK cell and B lymphocyte activation.

Inhibitor · Natural Compounds · Compound Libraries · Recombinant Proteins

This product is for Research Use Only · Not for Human or Veterinary or Therapeutic Use

Tel:781-999-4286 E_mail:info@targetmol.com Address:34 Washington Street,Wellesley Hills,MA 02481