

Anti-Caspase-8 Antibody (5V622)

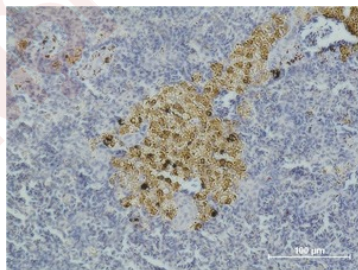
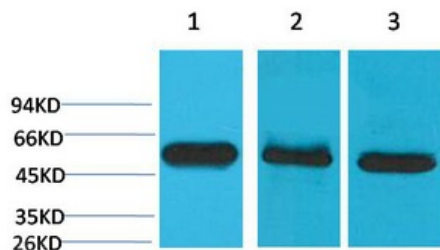
Product Details

Reactivity:	Human, Mouse, Rat
Conjugation:	Unconjugated
Molecular Weight:	Actual: 43, 57 kDa.
Clone:	5V622
Purification:	The antibody was affinity-purified from antiserum by affinity-chromatography

Applications

Verified Activity:

1. Western blot analysis of 1) HeLa, 2) Mouse Brain Tissue, 3) Rat Brain Tissue using Caspase-8 Monoclonal Antibody.
2. Immunohistochemical analysis of paraffin-embedded Mouse Spleen Tissue using Caspase-8 Monoclonal Antibody.



Application:	IHC, WB
Recommended	WB: 1:1000-2000; IHC: 1:200-500

Properties

Stability & Storage:	Store at -20°C or -80°C for 12 months. Avoid repeated freeze-thaw cycles.
Shipping:	Shipping with blue ice.

Antigen Details

Immunogen: Recombinant Protein

Uniprot ID: Q14790

CAP 4;MGC78473;FLICE;MACH beta 1/2/3/4 protein;FLJ17672;CASP8;Caspase-8 subunit p18; Caspase8;MACH alpha 1/2/3 protein;MCH 5;OTTHUMP00000206582;Caspase 8 apoptosis related cysteine peptidase;Apoptotic cysteine protease;FADD-like ICE;Apoptotic protease Mch-5;MORT1 associated CED 3 homolog;OTTHUMP00000163725;OTTHUMP00000163724;

Synonyms:

OTTHUMP00000165062;CED 3;CAP4;OTTHUMP00000165064;FADD Like ICE;Apoptosis related cysteine peptidase;ICE like apoptotic protease 5;FADD homologous ICE/CED 3 like protease; CASP 8;FADD Homologous ICE/CED3 Like Protease;Caspase 8;OTTHUMP00000165063;Apoptotic protease Mch 5;OTTHUMP00000163717;OTTHUMP00000163720;OTTHUMP00000206552; Amyotrophic lateral sclerosis 2 chromosomal region candidate gene 12 protein;ALPS2B;FADD-homologous ICE/ced-3-like protease;MCH5;MACH

Inhibitor · Natural Compounds · Compound Libraries · Recombinant Proteins

This product is for Research Use Only · Not for Human or Veterinary or Therapeutic Use

Tel:781-999-4286 E_mail:info@targetmol.com Address:34 Washington Street,Wellesley Hills,MA 02481