

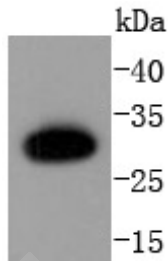
Anti-Caspase-6 Antibody (3I701)

Product Details

| | |
|-------------------|-------------------------|
| Ig Type: | IgG |
| Reactivity: | Human |
| Conjugation: | Unconjugated |
| Molecular Weight: | Theoretical: 18/33 kDa. |
| Clone: | 3I701 |
| Purification: | ProA affinity purified |

Applications

Verified Activity: 1. Western blot analysis of Caspase-6 p18 on U937 cells lysates using anti-Caspase-6 p18 antibody at 1/1,000 dilution.



| | |
|--------------|-----------------|
| Application: | IP,WB |
| Recommended | WB: 1:1000-5000 |

Properties

Stability & Storage: Store at -20°C or -80°C for 12 months. Avoid repeated freeze-thaw cycles.
Shipping: Shipping with blue ice.

Antigen Details

| | |
|-------------|---|
| Immunogen: | Recombinant Protein |
| Uniprot ID: | P55212 |
| Synonyms: | CASP-6;Caspase6;OTTHUMP00000162742;Caspase 6, apoptosis related cysteine peptidase; Caspase-6 subunit p20;Caspase 6 apoptosis related cysteine protease;Caspase-6 subunit p11; Apoptotic protease Mch-2;CASP6_HUMAN;OTTHUMP00000162743;CASP6;MCH2;Apoptotic protease MCH2 |

Research Background

A unique family of cysteine proteases has been described that differs in sequence, structure and substrate specificity from any previously described protease family. This family, Ced-3/caspase-1, is comprised of caspase-1, caspase-2, caspase-3, caspase-4, caspase-6, caspase-7 (also designated Mch3, ICE-LAP3 or CMH-1), caspase-9 and caspase-10. Ced-3/caspase-1 family members function as key components of the apoptotic machinery and act to destroy specific target proteins which are critical to cellular longevity. Poly(ADP-ribose) polymerase plays an integral role in surveying for DNA mutations and double strand breaks. Caspase-3, caspase-7 and caspase-9, but not caspase-1,

A DRUG SCREENING EXPERT

have been shown to cleave the nuclear protein PARP into an apoptotic fragment. Caspase-6, but not caspase-3, has been shown to cleave the nuclear lamins which are critical to maintaining the integrity of the nuclear envelope and cellular morphology. Caspase-10 has been shown to activate caspase-3 and caspase-7 in response to apoptotic stimuli.

Inhibitor · Natural Compounds · Compound Libraries · Recombinant Proteins

This product is for Research Use Only · Not for Human or Veterinary or Therapeutic Use

Tel:781-999-4286 E_mail:info@targetmol.com Address:34 Washington Street,Wellesley Hills,MA 02481