

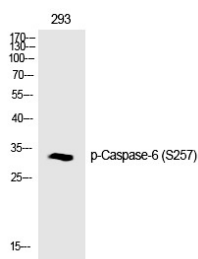
## Anti-Phospho-Caspase-6 (Ser257) Polyclonal Antibody

### Product Details

Ig Type:	IgG
Reactivity:	Human,Mouse,Rat
Conjugation:	Unconjugated
Molecular Weight:	Actual: 33 kDa.
Purification:	The antibody was affinity-purified from rabbit antiserum by affinity-chromatography using epitope-specific immunogen.

### Applications

Verified Activity: 1. Western Blot analysis of Jurkat cells using Phospho-Caspase-6 (S257) Polyclonal Antibody.



Application: ELISA,IF,IHC,WB

Recommended WB: 1:500-2000; IHC: 1:100-300; IF: 1:200-1000; ELISA: 1:20000

### Properties

Stability & Storage: Store at -20°C or -80°C for 12 months. Avoid repeated freeze-thaw cycles.

Shipping: Shipping with blue ice.

### Antigen Details

Immunogen:	A synthesized phosphopeptide: human Caspase-6 around the phosphorylation site of S257
Antigen Species:	Human
Uniprot ID:	P55212
Synonyms:	Caspase-6 (p-S257);p-Caspase-6 (Ser257);p-Caspase-6 (S257);Caspase-6 (p-Ser257)

**Inhibitor · Natural Compounds · Compound Libraries · Recombinant Proteins**

This product is for Research Use Only. Not for Human or Veterinary or Therapeutic Use

Tel:781-999-4286 E\_mail:info@targetmol.com Address:34 Washington Street,Wellesley Hills,MA 02481