

Anti-Caspase-14 Antibody (3A777)

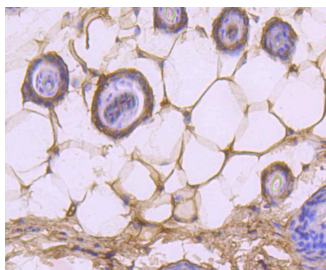
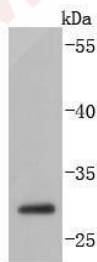
Product Details

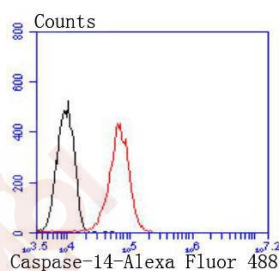
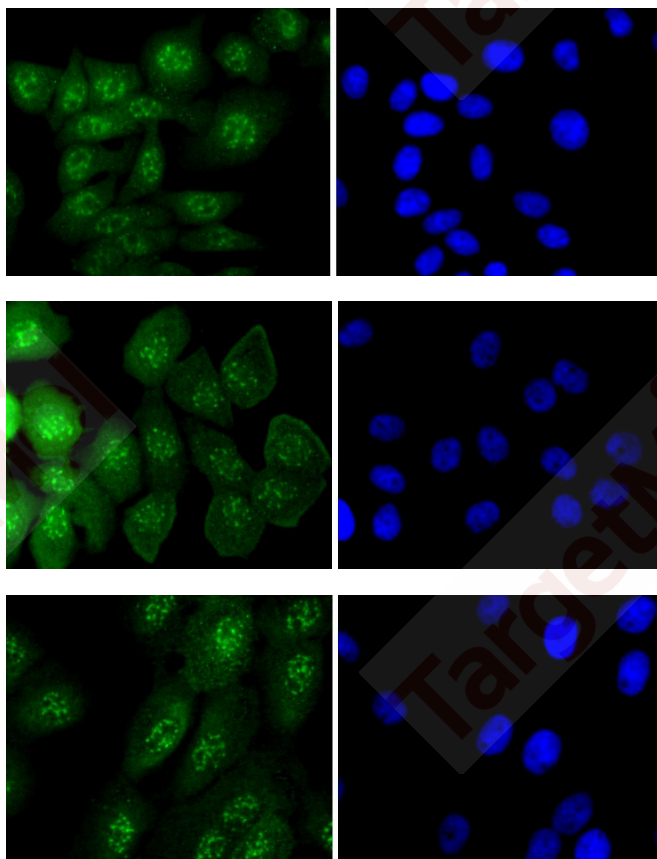
Ig Type:	IgG
Reactivity:	Human,Mouse,Rat
Conjugation:	Unconjugated
Molecular Weight:	Theoretical: 28 kDa.
Clone:	3A777
Purification:	ProA affinity purified

Applications

Verified Activity:

1. Western blot analysis of Caspase-14 on MCF-7 cells lysates using anti-Caspase-14 antibody at 1/1,000 dilution.
2. Immunohistochemical analysis of paraffin-embedded mouse skin tissue using anti-Caspase-14 antibody. Counter stained with hematoxylin.
3. ICC staining Caspase-14 in HepG2 cells (green). The nuclear counter stain is DAPI (blue). Cells were fixed in paraformaldehyde, permeabilised with 0.25% Triton X100/PBS.
4. ICC staining Caspase-14 in MCF-7 cells (green). The nuclear counter stain is DAPI (blue). Cells were fixed in paraformaldehyde, permeabilised with 0.25% Triton X100/PBS.
5. ICC staining Caspase-14 in A431 cells (green). The nuclear counter stain is DAPI (blue). Cells were fixed in paraformaldehyde, permeabilised with 0.25% Triton X100/PBS.
6. Flow cytometric analysis of A431 cells with Caspase-14 antibody at 1/50 dilution (red) compared with an unlabelled control (cells without incubation with primary antibody; black). Alexa Fluor 488-conjugated goat anti rabbit IgG was used as the secondary antibody.





Application: FCM, ICC/IF, IHC, IP, WB

Recommended WB: 1:1000; IHC: 1:50-200; ICC/IF: 1:50-200; FCM: 1:50-100

Properties

Stability & Storage: Store at -20°C or -80°C for 12 months. Avoid repeated freeze-thaw cycles.

Shipping: Shipping with blue ice.

Antigen Details

Immunogen: Recombinant Protein

Uniprot ID: P31944

Synonyms: caspase 14, apoptosis-related cysteine peptidase; ARCI12

Research Background

A unique family of cysteine proteases has been described that differs in sequence, structure and substrate specificity from any previously described protease family. This family, Ced-3/caspase-1, is composed of caspase-1, caspase-2, caspase-3, caspase-4, caspase-6 and caspase-7 (also designated Mch3, ICE-LAP3 or CMH-1), caspase-9, caspase-10, and caspase-14. Ced-3/caspase-1 family members function as key components of the apoptotic machinery and act to destroy specific target proteins which are critical to cellular longevity. Caspase-3, caspase-7 and caspase-9,

A DRUG SCREENING EXPERT

but not caspase-1, have been shown to cleave the nuclear protein PARP into an apoptotic fragment. Caspase-14, also designated MICE (for mini-ICE), is highly expressed in embryonic tissues but appears to be absent from adult tissues. Procaspace-14 can be processed in vitro by caspase-8 and caspase-10 but not by other caspases.

Inhibitor · Natural Compounds · Compound Libraries · Recombinant Proteins

This product is for Research Use Only · Not for Human or Veterinary or Therapeutic Use

Tel:781-999-4286 E_mail:info@targetmol.com Address:34 Washington Street,Wellesley Hills,MA 02481