

Anti-Caspase-1 Antibody (4V493)

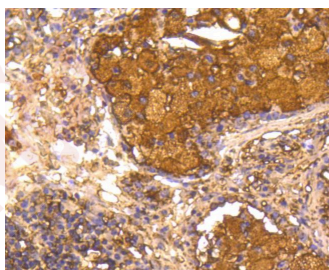
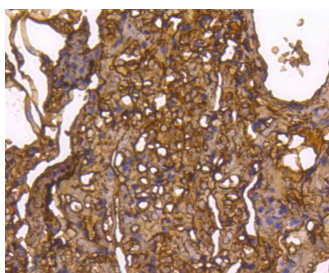
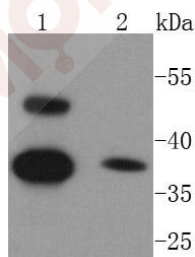
Product Details

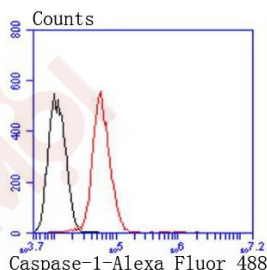
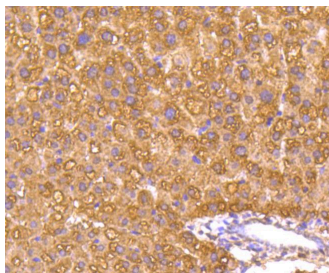
Ig Type:	IgG
Reactivity:	Human,Mouse,Rat
Conjugation:	Unconjugated
Molecular Weight:	Theoretical: 45 kDa.
Clone:	4V493
Purification:	ProA affinity purified

Applications

Verified Activity:

1. Western blot analysis of Caspase-1 on different lysates using anti-Caspase-1 antibody at 1/1,000 dilution. Positive control: Lane 1: THP-1, Lane 2: Jurkat.
2. Immunohistochemical analysis of paraffin-embedded human lung tissue using anti-Caspase-1 antibody. Counter stained with hematoxylin.
3. Immunohistochemical analysis of paraffin-embedded human lung cancer tissue using anti-Caspase-1 antibody. Counter stained with hematoxylin.
4. Immunohistochemical analysis of paraffin-embedded mouse liver tissue using anti-Caspase-1 antibody. Counter stained with hematoxylin.
5. Flow cytometric analysis of Hela cells with Caspase-1 antibody at 1/50 dilution (red) compared with an unlabelled control (cells without incubation with primary antibody; black). Alexa Fluor 488-conjugated goat anti rabbit IgG was used as the secondary antibody.





Application: FCM,IHC,WB
Recommended WB: 1:1000-2000; IHC: 1:50-200; FCM: 1:50-100

Properties

Stability & Storage: Store at -20°C or -80°C for 12 months. Avoid repeated freeze-thaw cycles.
Shipping: Shipping with blue ice.

Antigen Details

Immunogen: Recombinant Protein
Uniprot ID: P29466
Synonyms: IL1BC;CASP 1;Caspase-1;p45;Interleukin-1 b-converting enzyme (ICE;IL-1 b-converting enzyme);IL-1BC;IL-1 β-converting enzyme);IL1BCE;Interleukin-1 β convertase (IL-1BC); Interleukin-1 beta convertase (IL-1BC)

Research Background

Caspase-1, originally designated ICE (for IL-1 converting enzyme), is a member of the group of caspases with large prodomains. Caspase-1 promotes maturation of interleukin IL-1 β and interleukin18 (IL-18) by proteolytic cleavage of precursor forms into biologically active pro-inflammatory cytokines. Active caspase-1, a (p20/p10) $_2$ tetramer, is necessary and sufficient for cleavage of precursor IL-1 as well as for induction of apoptosis in some cell lines. The highly conserved family of caspases mediate many of the morphological and biochemical features of apoptosis, including structural dismantling of cell bodies and nuclei, fragmentation of genomic DNA, destruction of regulatory proteins and propagation of other pro-apoptotic molecules. The human Caspase-1 gene maps to chromosome 2q14 and encodes a cytoplasmic protein expressed in liver, heart, skeletal muscle kidney and testis. Caspase-1 has been implicated in inflammation, septic shock, and other situations such as wound healing and the growth of certain leukemias.

Inhibitor · Natural Compounds · Compound Libraries · Recombinant Proteins

This product is for Research Use Only · Not for Human or Veterinary or Therapeutic Use

Tel:781-999-4286 E_mail:info@targetmol.com Address:34 Washington Street,Wellesley Hills,MA 02481