

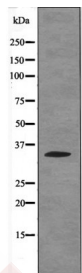
## Anti-Phospho-Caspase-3 (Ser26) Polyclonal Antibody

## Product Details

Ig Type:	IgG
Reactivity:	Mouse,Rat
Conjugation:	Unconjugated
Molecular Weight:	Theoretical: 34 kDa.
Purification:	Antibodies were produced by immunizing rabbits with synthetic phosphopeptide and KLH conjugates. Antibodies were purified by affinity-chromatography using epitope-specific phosphopeptide. Non-phospho specific antibodies were removed by chromatography using non-phosphopeptide.

## Applications

Verified Activity: 1. Western blot analysis Caspase 3 (Phospho-Ser26) using P Rat kidney tissue lysates.



Application:	WB
Recommended	WB: 1:1000

## Properties

Stability & Storage: Store at -20°C or -80°C for 12 months. Avoid repeated freeze-thaw cycles.  
Shipping: Shipping with blue ice.

## Antigen Details

Immunogen:	A synthesized phosphopeptide: human Caspase 3 around the phosphorylation site of Ser26
Antigen Species:	human
Uniprot ID:	P42574
Synonyms:	p-Caspase-3 (Ser26);Caspase-3 (p-S26);Caspase-3 (p-Ser26);p-Caspase-3 (S26)

**Inhibitor · Natural Compounds · Compound Libraries · Recombinant Proteins**

This product is for Research Use Only. Not for Human or Veterinary or Therapeutic Use

Tel:781-999-4286 E\_mail:info@targetmol.com Address:34 Washington Street,Wellesley Hills,MA 02481