

## Anti-Phospho-CK1 alpha/CSNK1A1 (Tyr321) Polyclonal Antibody

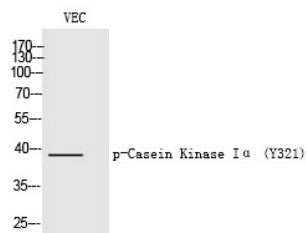
## Product Details

Ig Type:	IgG
Reactivity:	Human,Mouse,Rat
Conjugation:	Unconjugated
Molecular Weight:	Actual: 35 kDa.
Purification:	The antibody was affinity-purified from rabbit antiserum by affinity-chromatography using epitope-specific immunogen.

## Applications

## Verified Activity:

1. Western Blot analysis of VEC cells using Phospho-Casein Kinase I $\alpha$  (Y321) Polyclonal Antibody.



Application:	ELISA,IHC,WB
Recommended	WB: 1:500-2000; IHC: 1:100-300; ELISA: 1:5000

## Properties

Stability & Storage:	Store at -20°C or -80°C for 12 months. Avoid repeated freeze-thaw cycles.
Shipping:	Shipping with blue ice.

## Antigen Details

Immunogen:	A synthesized phosphopeptide: human Casein Kinase I $\alpha$ around the phosphorylation site of Y321
Antigen Species:	human
Uniprot ID:	P48729
Synonyms:	CK1 alpha/CSNK1A1 (p-Tyr321);p-CK1 alpha/CSNK1A1 (Tyr321);p-CK1 alpha/CSNK1A1 (Y321); CK1 alpha/CSNK1A1 (p-Y321)

**Inhibitor · Natural Compounds · Compound Libraries · Recombinant Proteins**

This product is for Research Use Only. Not for Human or Veterinary or Therapeutic Use

Tel:781-999-4286 E\_mail:info@targetmol.com Address:34 Washington Street,Wellesley Hills,MA 02481