

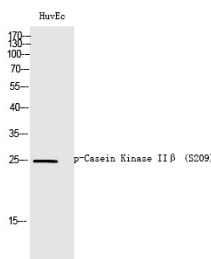
Anti-Phospho-Casein Kinase II β (Ser209) Polyclonal Antibody

Product Details

Ig Type:	IgG
Reactivity:	Human,Mouse,Rat
Conjugation:	Unconjugated
Molecular Weight:	Actual: 25 kDa.
Purification:	The antibody was affinity-purified from rabbit antiserum by affinity-chromatography using epitope-specific immunogen.

Applications

Verified Activity: 1. Western Blot analysis of HuvEc cells using Phospho-Casein Kinase II β (S209) Polyclonal Antibody.



Application:	ELISA,IHC,WB
Recommended	WB: 1:500-2000; IHC: 1:100-300; ELISA: 1:40000

Properties

Stability & Storage:	Store at -20°C or -80°C for 12 months. Avoid repeated freeze-thaw cycles.
Shipping:	Shipping with blue ice.

Antigen Details

Immunogen:	A synthesized phosphopeptide: human Casein Kinase II β around the phosphorylation site of S209
Antigen Species:	human
Uniprot ID:	P67870
Synonyms:	Casein Kinase II β (p-Ser209);p-Casein Kinase II β (Ser209);p-Casein Kinase II β (S209);Casein Kinase II β (p-S209)

Inhibitor · Natural Compounds · Compound Libraries · Recombinant Proteins

This product is for Research Use Only. Not for Human or Veterinary or Therapeutic Use

Tel:781-999-4286 E_mail:info@targetmol.com Address:34 Washington Street,Wellesley Hills,MA 02481