

## Anti-Phospho-CK2 alpha/CSNK2A1 (Tyr255) Polyclonal Antibody

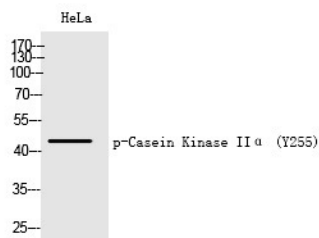
## Product Details

Ig Type:	IgG
Reactivity:	Human,Mouse,Rat
Conjugation:	Unconjugated
Molecular Weight:	Actual: 45 kDa.
Purification:	The antibody was affinity-purified from rabbit antiserum by affinity-chromatography using epitope-specific immunogen.

## Applications

## Verified Activity:

1. Western Blot analysis of HeLa cells using Phospho-Casein Kinase II $\alpha$  (Y255) Polyclonal Antibody.



Application:	ELISA,IHC,WB
Recommended	WB: 1:500-2000; IHC: 1:100-300; ELISA: 1:10000

## Properties

Stability & Storage:	Store at -20°C or -80°C for 12 months. Avoid repeated freeze-thaw cycles.
Shipping:	Shipping with blue ice.

## Antigen Details

Immunogen:	A synthesized phosphopeptide: human Casein Kinase II $\alpha$ around the phosphorylation site of Y255
Antigen Species:	human
Uniprot ID:	P68400
Synonyms:	p-CK2 alpha/CSNK2A1 (Y255);CK2 alpha/CSNK2A1 (p-Y255);CK2 alpha/CSNK2A1 (p-Tyr255);p-CK2 alpha/CSNK2A1 (Tyr255)

**Inhibitor · Natural Compounds · Compound Libraries · Recombinant Proteins**

This product is for Research Use Only. Not for Human or Veterinary or Therapeutic Use

Tel:781-999-4286 E\_mail:info@targetmol.com Address:34 Washington Street,Wellesley Hills,MA 02481