

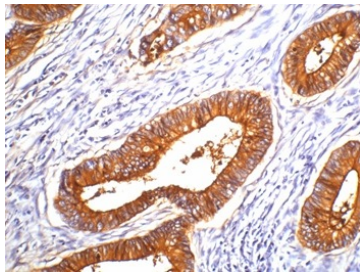
Anti-Carcinoembryonic Antigen Antibody (8J796)

Product Details

Reactivity:	Human
Conjugation:	Unconjugated
Clone:	8J796
Purification:	Affinity purification using immunogen.

Applications

Verified Activity: 1. IHC staining of human colon cancer tissue with CEA mouse mAb diluted at 1:200.



Application:	IHC
Recommended	IHC: 1:200

Properties

Stability & Storage: Store at -20°C or -80°C for 12 months. Avoid repeated freeze-thaw cycles.
Shipping: Shipping with blue ice.

Antigen Details

Uniprot ID:	P11465
Synonyms:	pregnancy-specific beta-1-glycoprotein 7;Pregnancy-specific β -1 glycoprotein E;PSBG2; Pregnancy specific β -1-glycoprotein 2;pregnancy-specific β -1-glycoprotein 2;PSG2;Pregnancy-specific beta-1 glycoprotein E;pregnancy-specific β -1-glycoprotein 7;pregnancy-specific beta-1-glycoprotein 2;Pregnancy specific beta-1-glycoprotein 2

Research Background

CEA is synthesised during development in the fetal gut, and is re-expressed in increased amounts in intestinal carcinomas and several other tumors. Antibodies to CEA are useful in identifying the origin of various metastatic adenocarcinomas and in distinguishing pulmonary adenocarcinomas (60 to 70% are CEA+) from pleural mesotheliomas (rarely or weakly CEA+).

Inhibitor · Natural Compounds · Compound Libraries · Recombinant Proteins

This product is for Research Use Only. Not for Human or Veterinary or Therapeutic Use

Tel:781-999-4286 E_mail:info@targetmol.com Address:34 Washington Street,Wellesley Hills,MA 02481