

Anti-Phospho-CAMKII beta/gamma/delta (Thr287) Antibody (8M391)

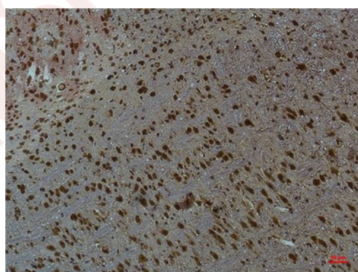
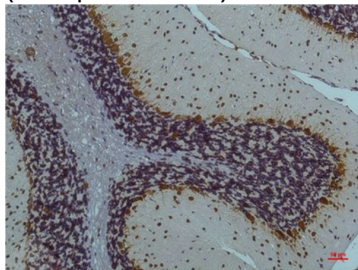
Product Details

Ig Type:	IgG1
Reactivity:	Human,Mouse,Rat
Conjugation:	Unconjugated
Molecular Weight:	Theoretical: 50 kDa.
Clone:	8M391

Applications

Verified Activity:

1. Immunohistochemical analysis of paraffin-embedded Rat Brain Tissue using CaMKII $\beta/\gamma/\delta$ (Phospho Thr287) mAb diluted at 1:200.
2. Immunohistochemical analysis of paraffin-embedded Mouse Brain Tissue using CaMKII $\beta/\gamma/\delta$ (Phospho Thr287) Mouse mAb diluted at 1:200.



Application:	IHC
Recommended	IHC: 1:100-200

Properties

Stability & Storage:	Store at -20°C or -80°C for 12 months. Avoid repeated freeze-thaw cycles.
Shipping:	Shipping with blue ice.

Antigen Details

Immunogen: A synthesized peptide
Uniprot ID: Q13554 & Q13555 & Q13557
Synonyms: CAMKII beta/gamma/delta (p-Thr287);p-CAMKII beta/gamma/delta (T287);p-CAMKII beta/gamma/delta (Thr287);CAMKII beta/gamma/delta (p-T287)

Inhibitor · Natural Compounds · Compound Libraries · Recombinant Proteins

This product is for Research Use Only · Not for Human or Veterinary or Therapeutic Use

Tel:781-999-4286 E_mail:info@targetmol.com Address:34 Washington Street,Wellesley Hills,MA 02481