

Anti-Phospho-CAMKIV (Thr196, 200) Polyclonal Antibody

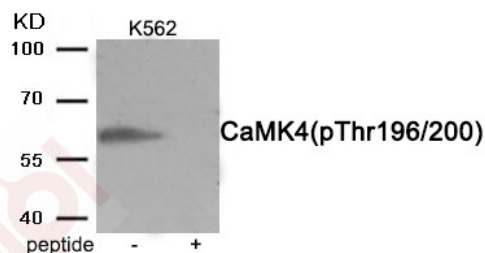
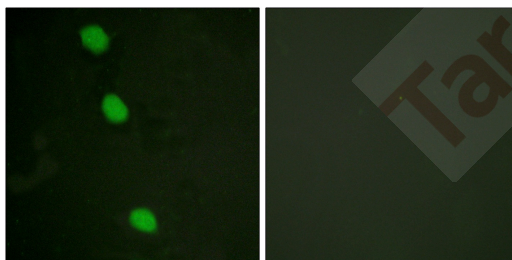
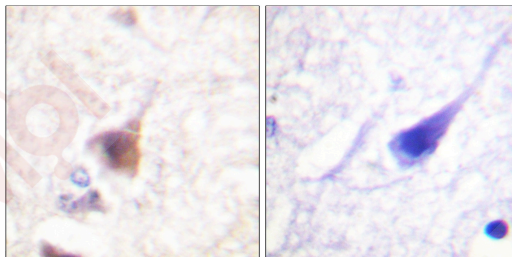
Product Details

Ig Type:	IgG
Reactivity:	Human,Mouse,Rat
Conjugation:	Unconjugated
Molecular Weight:	Actual: 60 kDa.
Purification:	Antibodies were produced by immunizing rabbits with synthetic phosphopeptide and KLH conjugates. Antibodies were purified by affinity-chromatography using epitope-specific phosphopeptide. Non-phospho specific antibodies were removed by chromatography using non-phosphopeptide.

Applications

Verified Activity:

1. Immunohistochemistry analysis of paraffin-embedded human brain, using CaMK4 (Phospho-Thr196/200) Antibody. The picture on the right is blocked with the phospho peptide.
2. Immunofluorescence analysis of HeLa cells, using CaMK4 (Phospho-Thr196/200) Antibody. The picture on the right is blocked with the phospho peptide.
3. Western blot analysis of extracts from K562 cells treated with H2O2 using Phospho-CaMK4 (Thr196/200) antibody TMAC-00539. The lane on the right is treated with the antigen-specific peptide.



Application: IF,IHC,WB

Recommended WB: 1:500-2000; IHC: 1:100-300; IF: 1:200-1000

Properties

Stability & Storage: Store at -20°C or -80°C for 12 months. Avoid repeated freeze-thaw cycles.

Shipping: Shipping with blue ice.

Antigen Details

Immunogen: A synthesized phosphopeptide: human CaMK4 around the phosphorylation site of Thr196/200

Antigen Species: Human

Uniprot ID: Q16566

Synonyms: CAMKIV (p-Thr196, 200);p-CAMKIV (T196, 200);p-CAMKIV (Thr196, 200);CAMKIV (p-T196, 200)

Research Background

Calcium/calmodulin-dependent protein kinase that operates in the calcium-triggered CaMKK-CaMK4 signaling cascade and regulates, mainly by phosphorylation, the activity of several transcription activators, such as CREB1, MEF2D, JUN and RORA, which play pivotal roles in immune response, inflammation, and memory consolidation. In the thymus, regulates the CD4+/CD8+ double positive thymocytes selection threshold during T-cell ontogeny. In CD4 memory T-cells, is required to link T-cell antigen receptor (TCR) signaling to the production of IL2, IFNG and IL4 (through the regulation of CREB and MEF2).

Inhibitor · Natural Compounds · Compound Libraries · Recombinant Proteins

This product is for Research Use Only · Not for Human or Veterinary or Therapeutic Use

Tel:781-999-4286 E_mail:info@targetmol.com Address:34 Washington Street,Wellesley Hills,MA 02481
