

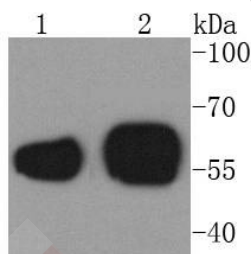
Anti-Calreticulin Antibody (8J512)

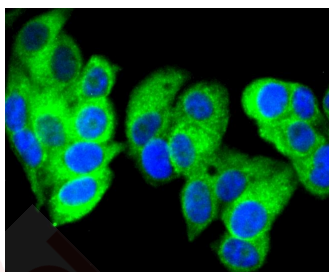
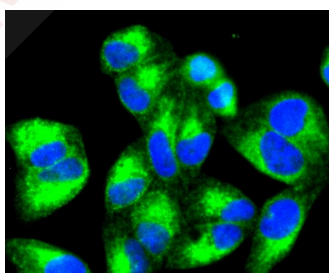
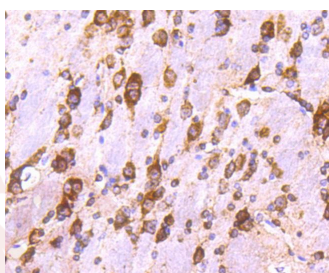
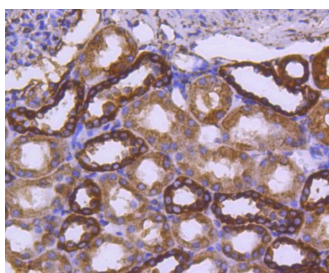
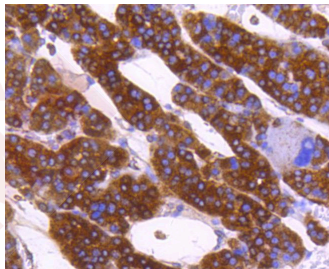
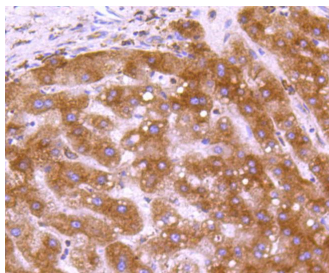
Product Details

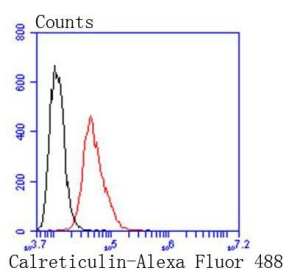
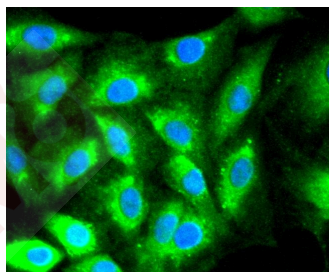
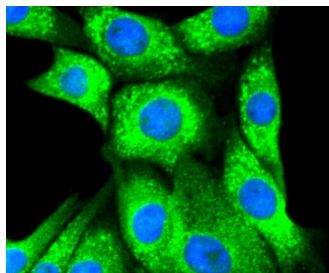
Ig Type:	IgG
Reactivity:	Human,Mouse,Rat
Conjugation:	Unconjugated
Molecular Weight:	Theoretical: 60 kDa.
Clone:	8J512
Purification:	ProA affinity purified

Applications

- Western blot analysis of Calreticulin on different lysates using anti-Calreticulin antibody at 1/1,000 dilution. Positive control: Lane 1: SH-SY-5Y, Lane 2: HL-60.
 - Immunohistochemical analysis of paraffin-embedded human liver tissue using anti-Calreticulin antibody. Counter stained with hematoxylin.
 - Immunohistochemical analysis of paraffin-embedded human liver cancer tissue using anti-Calreticulin antibody. Counter stained with hematoxylin.
 - Immunohistochemical analysis of paraffin-embedded human kidney tissue using anti-Calreticulin antibody. Counter stained with hematoxylin.
 - Immunohistochemical analysis of paraffin-embedded mouse brain tissue using anti-Calreticulin antibody. Counter stained with hematoxylin.
- Verified Activity:
- ICC staining Calreticulin in Hela cells (green). The nuclear counter stain is DAPI (blue). Cells were fixed in paraformaldehyde, permeabilised with 0.25% Triton X100/PBS.
 - ICC staining Calreticulin in MCF-7 cells (green). The nuclear counter stain is DAPI (blue). Cells were fixed in paraformaldehyde, permeabilised with 0.25% Triton X100/PBS.
 - ICC staining Calreticulin in NIH/3T3 cells (green). The nuclear counter stain is DAPI (blue). Cells were fixed in paraformaldehyde, permeabilised with 0.25% Triton X100/PBS.
 - ICC staining Calreticulin in L6 cells (green). The nuclear counter stain is DAPI (blue). Cells were fixed in paraformaldehyde, permeabilised with 0.25% Triton X100/PBS.
 - Flow cytometric analysis of Hela cells with Calreticulin antibody at 1/50 dilution (red) compared with an unlabelled control (cells without incubation with primary antibody; black). Alexa Fluor 488-conjugated goat anti rabbit IgG was used as the secondary antibody.







Application: FCM,ICC/IF,IHC,IP,WB

Recommended WB: 1:1000-5000; IHC: 1:50-200; ICC/IF: 1:100-500; FCM: 1:50-100

Properties

Stability & Storage: Store at -20°C or -80°C for 12 months. Avoid repeated freeze-thaw cycles.

Shipping: Shipping with blue ice.

Antigen Details

Immunogen: Recombinant Protein

Uniprot ID: P27797

Synonyms: cC1qR;SSA;CRT;calreticulin;HEL-S-99n;RO

Research Background

Calnexin and calregulin (also called calreticulin) are calcium-binding proteins that are localized to the endoplasmic reticulum, Calnexin to the membrane and calregulin to the lumen. Calnexin is a type I membrane protein that interacts with newly synthesized glycoproteins in the endoplasmic reticulum. It may play a role in assisting with protein assembly and in retaining unassembled protein subunits in the endoplasmic reticulum. Calregulin has both low- and high-affinity calcium-binding sites. Neither Calnexin nor calregulin contains the calcium-binding "E-F hand" motif found in calmodulins. Calnexin and calregulin are important for the maturation of glycoproteins in the endoplasmic reticulum and appear to bind many of the same proteins.

Inhibitor · Natural Compounds · Compound Libraries · Recombinant Proteins

This product is for Research Use Only · Not for Human or Veterinary or Therapeutic Use

Tel:781-999-4286 E_mail:info@targetmol.com Address:34 Washington Street,Wellesley Hills,MA 02481