

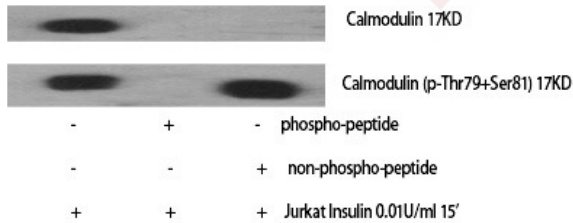
Anti-Phospho-CALM1 (Thr80, Ser82) Polyclonal Antibody

Product Details

Ig Type:	IgG
Reactivity:	Human,Mouse,Rat
Conjugation:	Unconjugated
Molecular Weight:	Theoretical: 16 kDa.
Purification:	The antibody was affinity-purified from rabbit antiserum by affinity-chromatography using epitope-specific immunogen.

Applications

Verified Activity: 1. Western Blot analysis of Jurkat+Insulin cells using Phospho-Calmodulin (T80/S82) Polyclonal Antibody.



Application:	ELISA,IF,IHC,WB
Recommended	WB: 1:500-2000; IHC: 1:100-300; IF: 1:200-1000; ELISA: 1:5000

Properties

Stability & Storage:	Store at -20°C or -80°C for 12 months. Avoid repeated freeze-thaw cycles.
Shipping:	Shipping with blue ice.

Antigen Details

Immunogen:	A synthesized phosphopeptide: human Calmodulin around the phosphorylation site of T80/S82
Antigen Species:	human
Uniprot ID:	P62158
Synonyms:	p-CALM1 (T80, S82);p-CALM1 (Thr80, Ser82);CALM1 (p-T80, S82);CALM1 (p-Thr80, Ser82)

Inhibitor · Natural Compounds · Compound Libraries · Recombinant Proteins

This product is for Research Use Only. Not for Human or Veterinary or Therapeutic Use

Tel:781-999-4286 E_mail:info@targetmol.com Address:34 Washington Street,Wellesley Hills,MA 02481