

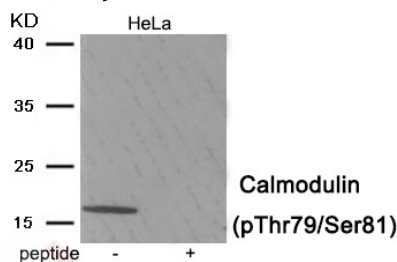
Anti-Phospho-CALM1 (Thr79, Ser81) Polyclonal Antibody

Product Details

Ig Type:	IgG
Reactivity:	Human,Mouse,Rat
Conjugation:	Unconjugated
Molecular Weight:	Actual: 17 kDa.
Purification:	Antibodies were produced by immunizing rabbits with synthetic phosphopeptide and KLH conjugates. Antibodies were purified by affinity-chromatography using epitope-specific phosphopeptide. Non-phospho specific antibodies were removed by chromatography using non-phosphopeptide.

Applications

Verified Activity: 1. Western blot analysis of extracts from HeLa tissue using Calmodulin (Phospho-Thr79/Ser81) antibody TMAC-00524. The lane on the right is treated with the antigen-specific peptide.



Application:	WB
Recommended	WB: 1:500-1000

Properties

Stability & Storage:	Store at -20°C or -80°C for 12 months. Avoid repeated freeze-thaw cycles.
Shipping:	Shipping with blue ice.

Antigen Details

Immunogen:	Peptide sequence around phosphorylation site of threonine79/serine81(K-D-T(p)-D-S(p)-E-E) derived from Human Calmodulin
Antigen Species:	human
Uniprot ID:	P62158
Synonyms:	CALM1 (p-Thr79, Ser81);p-CALM1 (T79, S81);p-CALM1 (Thr79, Ser81);CALM1 (p-T79, S81)

Research Background

Calmodulin mediates the control of a large number of enzymes, ion channels, aquaporins and other proteins by Ca²⁺. Among the enzymes to be stimulated by the calmodulin-Ca²⁺ complex are a number of protein kinases and phosphatases. Together with CCP110 and centrin, is involved in a genetic pathway that regulates the centrosome cycle and progression through cytokinesis.

Inhibitor · Natural Compounds · Compound Libraries · Recombinant Proteins

This product is for Research Use Only · Not for Human or Veterinary or Therapeutic Use

Tel:781-999-4286 E_mail:info@targetmol.com Address:34 Washington Street,Wellesley Hills,MA 02481