

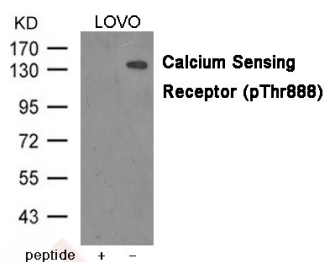
Anti-CASR Polyclonal Antibody

Product Details

Ig Type:	IgG
Reactivity:	Human
Conjugation:	Unconjugated
Molecular Weight:	Actual: 140 kDa.
Purification:	Antibodies were produced by immunizing rabbits with synthetic phosphopeptide and KLH conjugates. Antibodies were purified by affinity-chromatography using epitope-specific phosphopeptide. Non-phospho specific antibodies were removed by chromatography using non-phosphopeptide.

Applications

Verified Activity: 1. Western blot analysis of extracts from LOVO cells using Calcium Sensing Receptor (Phospho-Thr888) Antibody TMAC-00520. The lane on the left is treated with the antigen-specific peptide.



Application: WB

Properties

Stability & Storage: Store at -20°C or -80°C for 12 months. Avoid repeated freeze-thaw cycles.

Shipping: Shipping with blue ice.

Antigen Details

Immunogen:	Peptide sequence around phosphorylation site of Threonine 888 (R-A-T(p)-L-R) derived from Human Calcium Sensing Receptor
Antigen Species:	human
Uniprot ID:	P41180
Synonyms:	CaR;GPRC2A;Parathyroid cell calcium-sensing receptor 1 (PCaR1);hCasR;Extracellular calcium-sensing receptor;CaSR

Research Background

Senses changes in the extracellular concentration of calcium ions. The activity of this receptor is mediated by a G-protein that activates a phosphatidylinositol-calcium second messenger system.

Inhibitor · Natural Compounds · Compound Libraries · Recombinant Proteins

This product is for Research Use Only · Not for Human or Veterinary or Therapeutic Use

Tel:781-999-4286 E_mail:info@targetmol.com Address:34 Washington Street,Wellesley Hills,MA 02481