

Anti-Complement C3 Antibody (7T917)

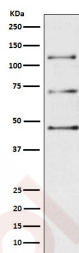
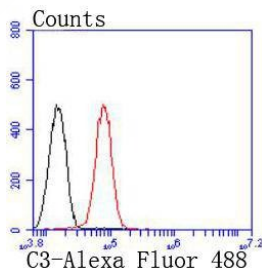
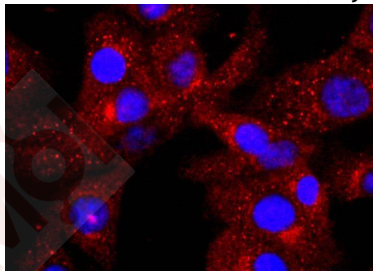
Product Details

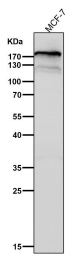
Ig Type:	IgG
Reactivity:	Human
Conjugation:	Unconjugated
Molecular Weight:	Theoretical: 187 kDa.
Clone:	7T917
Purification:	Affinity-chromatography

Applications

Verified Activity:

1. ICC staining C3 in NIH/3T3 cells (red). The nuclear counter stain is DAPI (blue). Cells were fixed in paraformaldehyde, permeabilised with 0.25% Triton X100/PBS.
2. Flow cytometric analysis of HepG2 cells with C3 antibody at 1/50 dilution (red) compared with an unlabelled control (cells without incubation with primary antibody; black). Alexa Fluor 488-conjugated goat anti rabbit IgG was used as the secondary antibody
3. Western blot analysis of C3 / C3a expression in Human plasma lysate.
4. All lanes use the Antibody at 1:2K dilution for 1 hour at room temperature.





Application: FCM,ICC/IF,WB

Recommended WB: 1:1000-2000; ICC/IF: 1:50-200; FCM 1:20-100

Properties

Stability & Storage: Store at 2°C-8°C for 1 month. Store at -20°C or -80°C for 12 months. Avoid repeated freeze-thaw cycles.

Shipping: Shipping with blue ice.

Antigen Details

Immunogen: A synthesized peptide: human Complement C3

Antigen Species: human

Uniprot ID: P01024

Synonyms: Anaphylatoxin; Complement Component C3a; C3a

Research Background

C3 plays a central role in the activation of the complement system. Its processing by C3 convertase is the central reaction in both classical and alternative complement pathways. After activation C3b can bind covalently, via its reactive thioester, to cell surface carbohydrates or immune aggregates.

Inhibitor · Natural Compounds · Compound Libraries · Recombinant Proteins

This product is for Research Use Only · Not for Human or Veterinary or Therapeutic Use

Tel: 781-999-4286 E_mail: info@targetmol.com Address: 34 Washington Street, Wellesley Hills, MA 02481
