

Anti-C10orf58 Antibody (6V65)

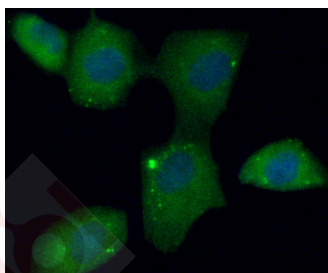
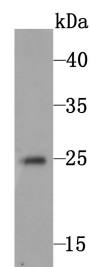
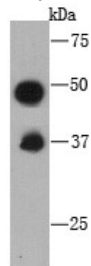
Product Details

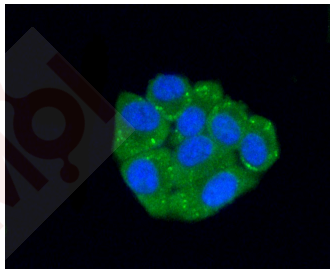
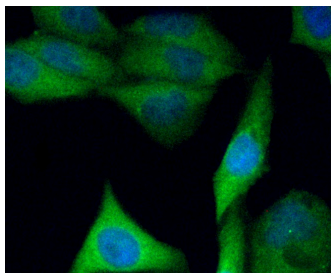
Reactivity:	Human
Conjugation:	Unconjugated
Clone:	6V65
Purification:	ProA affinity purified

Applications

Verified Activity:

1. Western blot analysis of C10orf58 on recombinant protein using anti-C10orf58 antibody at 1/1000 dilution.
2. Western blot analysis of C10orf58 on human skin tissue lysate using anti-C10orf58 antibody at 1/1000 dilution.
3. ICC staining C10orf58 (green) in HUVEC cells. The nuclear counter stain is DAPI (blue). Cells were fixed in paraformaldehyde, permeabilised with 0.25% Triton X100/PBS.
4. ICC staining C10orf58 (green) in PC-3M cells. The nuclear counter stain is DAPI (blue). Cells were fixed in paraformaldehyde, permeabilised with 0.25% Triton X100/PBS.
5. ICC staining C10orf58 (green) in HepG2 cells. The nuclear counter stain is DAPI (blue). Cells were fixed in paraformaldehyde, permeabilised with 0.25% Triton X100/PBS.





Application: ICC,WB
Recommended WB: 1:500; ICC: 1:50-200

Properties

Stability & Storage: Store at -20°C or -80°C for 12 months. Avoid repeated freeze-thaw cycles.
Shipping: Shipping with blue ice.

Antigen Details

Immunogen: Recombinant Protein
Uniprot ID: Q9BRX8
Synonyms: C10orf58;UPF0765 protein C10orf58;CJ058_HUMAN

Research Background

FAM213A, also known as PAMM (peroxiredoxin-like 2 activated in M-CSF stimulated monocytes) or C10orf58, is a 229 amino acid cytoplasmic protein that belongs to the peroxiredoxin-like FAM213 family and FAM213A subfamily. FAM213A plays a role in redox regulation of the cell, acts as an antioxidant, and is induced by CSF1 in peripheral blood mononuclear cells (PBMCs). Existing as two alternatively spliced isoforms, the gene encoding FAM213A maps to human chromosome 10. Spanning nearly 135 million base pairs, chromosome 10 makes up approximately 4.5% of total DNA in cells and encodes nearly 1,200 genes.

Inhibitor · Natural Compounds · Compound Libraries · Recombinant Proteins

This product is for Research Use Only. Not for Human or Veterinary or Therapeutic Use

Tel:781-999-4286 E_mail:info@targetmol.com Address:34 Washington Street,Wellesley Hills,MA 02481