

Anti-Phospho-C/EBP alpha (Ser21) Polyclonal Antibody

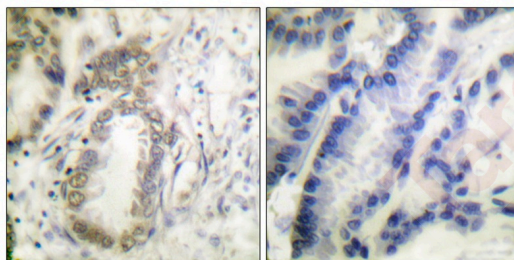
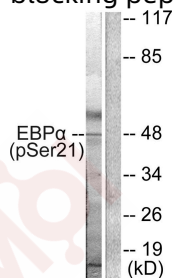
Product Details

Ig Type:	IgG
Reactivity:	Human,Mouse,Rat
Conjugation:	Unconjugated
Molecular Weight:	Actual: 45 kDa.
Purification:	Antibodies were produced by immunizing rabbits with synthetic phosphopeptide and KLH conjugates. Antibodies were purified by affinity-chromatography using epitope-specific phosphopeptide. Non-phospho specific antibodies were removed by chromatography using non-phosphopeptide.

Applications

Verified Activity:

- Western blot analysis of extracts from HepG2 cells treated with EGF using C/EBP- α (phospho-Ser21) Antibody TMAC-00496. The lane on the right is treated with the antigen-specific peptide.
- Immunohistochemical analysis of paraffin-embedded human colon carcinoma tissue using C/EBP- α (phospho-Ser21) antibody TMAC-00496 (left) or the same antibody preincubated with blocking peptide (right).



Application:	IHC,WB
Recommended	WB: 1:500-1000; IHC: 1:50-100

Properties

Stability & Storage:	Store at -20°C or -80°C for 12 months. Avoid repeated freeze-thaw cycles.
Shipping:	Shipping with blue ice.

Antigen Details

Immunogen: Peptide sequence around phosphorylation site of Serine 21 (L-Q-S(p)-P-P) derived from Human C/EBP- α

Antigen Species: human

Uniprot ID: P49715

Synonyms: C/EBP alpha (p-Ser21);C/EBP alpha (p-S21);p-C/EBP alpha (Ser21);p-C/EBP alpha (S21)

Research Background

C/EBP is a DNA-binding protein that recognizes two different motifs: the CCAAT homology common to many promoters and the enhanced core homology common to many enhancers.

Inhibitor · Natural Compounds · Compound Libraries · Recombinant Proteins

This product is for Research Use Only · Not for Human or Veterinary or Therapeutic Use

Tel:781-999-4286 E_mail:info@targetmol.com Address:34 Washington Street,Wellesley Hills,MA 02481