

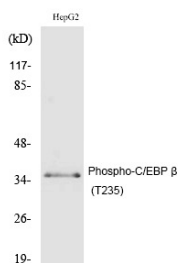
Anti-Phospho-C/EBP Beta (Thr235) Polyclonal Antibody

Product Details

Ig Type:	IgG
Reactivity:	Human,Mouse,Rat
Conjugation:	Unconjugated
Molecular Weight:	Actual: 36 kDa.
Purification:	The antibody was affinity-purified from rabbit antiserum by affinity-chromatography using epitope-specific immunogen.

Applications

Verified Activity: 1. Western Blot analysis of HepG2 cells using Phospho-C/EBP β (T235) Polyclonal Antibody.



Application:	ELISA,IF,IHC,WB
Recommended	WB: 1:500-2000; IHC: 1:100-300; IF: 1:200-1000; ELISA: 1:10000

Properties

Stability & Storage:	Store at -20°C or -80°C for 12 months. Avoid repeated freeze-thaw cycles.
Shipping:	Shipping with blue ice.

Antigen Details

Immunogen:	A synthesized phosphopeptide: human C/EBP β around the phosphorylation site of T235
Antigen Species:	human
Uniprot ID:	P17676
Synonyms:	C/EBP Beta (p-Thr235);C/EBP Beta (p-T235);p-C/EBP Beta (T235);p-C/EBP Beta (Thr235)

Inhibitor · Natural Compounds · Compound Libraries · Recombinant Proteins

This product is for Research Use Only. Not for Human or Veterinary or Therapeutic Use

Tel:781-999-4286 E_mail:info@targetmol.com Address:34 Washington Street,Wellesley Hills,MA 02481